

Kingfisher



Sheffield &
Rotherham



The Wildlife Trust for Sheffield and Rotherham

Victoria Hall, 37 Stafford Road, Sheffield S2 2SF
Tel: 0114 2634335 Fax: 2634345
mail@wildsheffield.com
www.wildsheffield.com

Volunteers

Working to make Sheffield a better place for people and wildlife takes money, time and goodwill. We are totally dependent on our members, funders, partners, and volunteers. A big thank you to all our volunteers who have helped us out over the last few months:

Vicki Froggatt, Cheryl Kelsall, Matthew Smith, Ben Postance, Ann Clegg, Stephen Bradley, Dave Higgins, Mike Timmons, Ross Hanson, Timothy Draper, Craig Johnson, Phil Spamer, Meurig Palin, Harry Corbey, Alex Bryant, Daniel Marston, Chris Carter, Victoria Burton, Alison Somerset Ward, Mohammed Abdo, Sadaf Khan, Valeria Pico, Charlotte Abel, Pete Mella, Nicky Moore, Rachel Stevenson, Claire Taylor, Matt Shaw, Nick Blood, Laura Boyles, Stuart Bown, Shaun Morgan, Sarah Jaggard, Simon Doxford, Katherine Williams, Dawn Sockett, Paul Moore, Chris Smith, Dawn Bond, Charmian Cochrane Hay, Brendon Wittram, Kelly Brindley, Lucy Davies, Roger Brooks, Darren Raynes, Michael Bond, Kevin Overton, Rachel Mallichan, Jessica Judson

...and thanks, most importantly, to all our members.

Trustees

Dr Patrick Vaughan, Margaret Spence, Roderick Lees, Nigel Dunnett, Ann Clegg, Mike Allen, Penny Simpson, Richard Pethen, Anne Ash, Pete Quinn, Collette Harvey

Corporate Members

E.on
Sheffield Forgemasters International Ltd
Northend Creative Print Solutions
Bluetree Design and Print
New Habits Training
Printing.com
Modern Creatives
Rotherham and Barnsley Chamber of Commerce
Earthmine
Eco-Power Solutions Ltd
Hanson Contracts Ltd
Airmaster Air Conditioning Ltd

Front cover photo © Stuart Bown
Sheffield Wildlife Trust is registered as charity no. 700 638; company no. 2287 928. *Kingfisher* is edited by Laura Boyles, designed by Tim Mackey and printed by J W Northend Ltd on 100 per cent recycled paper.

NEWS

Carbrook clean-up	4
Local business	5
Meersbrook Wildlife Watch	5
John Lewis	5
Dancing frogs and artful entrances	6
AGM 2011	6
Great grey shrike	7
Ponds get Biffaward grant	7

GET INVOLVED

Wildlife on your doorstep	8
Education online	10
Half marathon volunteers	10
Calling all Owls	10
Recommend a wildlife friend	11

ARTICLES

Blacka Moor update	12
Greno Woods update	14
White-clawed crayfish - extinction risk	15

Rivelin Valley by Roger Redfern **back page**

Editor's comment

Welcome to the 75th issue of *Kingfisher*. 2011 is looking like it will be a year full of challenges and opportunities for all of us.

In this issue we are pleased to bring you exciting updates about our Greno Woods Appeal on page 14. With a great public response and news on several funding bids, things are looking very good for Greno. Birds on Blacka Moor will be singing all the louder with news of a programme of management on the reserve aimed at improving the numbers of woodland bird species, read more on page 13 And make sure to visit our Events pages – there's so much going on, we're sure you'll find something to make you smile.

On a more sober note, government cuts are having a serious impact on everyone; certainly cuts to charities and funding organisations mean that we are working with considerably less money. This means we have had to take the unhappy step of putting some of our staff on notice of redundancy, while some others will not have their contracts renewed. We are working tirelessly to fill the gaps in our budget, so there is still hope, but as you can see, we need the support of our members now more than ever.

We know that times are tough for everyone, but simply continuing to make your regular donation is a vital lifeline for us. Spreading the word about the Trust to family and friends is another big help. Of course, if you can do more, we would be thrilled to hear from you.

I hope you enjoy this issue of *Kingfisher*. If you have any comments or suggestions for future issues, you are welcome to write to the Editor at the Trust's postal address, or via email: mail@wildsheffield.com, with 'Kingfisher' in the subject line.

For further information on every aspect of the Trust, visit our website, wildsheffield.com.

As ever, we value your support and feedback.

Laura Boyles, Editor



Carbrook clean-up



If you've visited one of our urban nature reserves recently, you may have bumped into our Nature Reserve Team and volunteers, who have been out conducting visitor surveys. The purpose of the surveys was to find out what the public think about their local urban reserves and how they use them. Results indicated that one of the main problems on Carbrook Ravine was litter. Given this feedback, we were delighted to hear that Global Social Policy student Emily Butler, from the University of Sheffield, was looking to take part in a sponsored litter-pick on one of our reserves to raise money to volunteer at a school in South Africa.

Wielding their litter pickers, Emily and her band of willing volunteers set to, sifting through the discarded bottles and crisp packets entangled within the vegetation. A substantial seventeen refuse sacks were



filled and removed from the site.

"The day was fantastic, everyone had a wonderful time and the representatives from the Trust were friendly and helpful. Just as we were finishing, a man crossed the road to thank us for the difference we'd made. Even if I wasn't being sponsored, that alone would have made it all worthwhile," said Emily.



Local businesses join forces to support the Wildlife Trust

Six local businesses have demonstrated their environmental credentials by recently joining the Wildlife Trust for Sheffield and Rotherham as corporate members.

The companies Eco-Power Solutions, Printing.com, Earthmine, Modern Creatives, Airmaster Air Conditioning, and Hanson Contracts have all joined as small business members.

As corporate members they enjoy a range of benefits including a free consultation with ecological consultants Wildscapes, events and activities allowing them to learn more about the Trusts work and network with other members, copies of the Wildlife Trusts publications and of course the knowledge that they are supporting a valued local charity.

The companies have also helped the Trust to gain insight into how to attract other SME's to the Trusts corporate membership scheme and a new leaflet to promote the scheme has been produced.

Take Action: If you work for a local company and think they might be interested in the scheme then please get in touch with Cathy Slater, Head of Development and Membership for more information.

c.slater@wildsheffield.com

Meersbrook Wildlife Watch are winners!

Our own Meersbrook Park Wildlife Watch group have scooped a 'Highly Commended' as part of the national Watch Group of the Year Awards 2010. The children worked hard at creating a lovely scrapbook to record all the wonderful wildlife activities and fun they had throughout the year, then entered their scrapbook into the competition. The group was notified in January that they had won an award. Sheffield Watch Co-ordinator Nicky Moore said "The competition this year was so close and all the entries were of a very high standard, so it's

a great achievement to get this award. We are very proud of the group and it's a fabulous way for their dedication and commitment to wildlife to be recognised."

The judges also commented on their creative programme, the contribution the group has made to Meersbrook Park by planting 500 bulbs, and the popularity of the group. They also thought that the group looks like it has lots of fun!

If you would like to know more about Wildlife Watch and a group near you, please call Nicky on 0114 2634335 or email n.moore@wildsheffield.com

Take Action: Join your local Wildlife Watch group. Visit our website, www.wildsheffield.com, for more information

John Lewis Golden Jubilee Trust

This March we are delighted to be welcoming a new member of staff - Dorothy Clarkson from John Lewis. Supported through the John Lewis Golden Jubilee Trust, Dorothy will be seconded to the Wildlife Trust for a period of 6 months. Dorothy will be working on a number of projects including ecological surveys and fundraising and will no doubt bring valuable skills and a fresh approach to the Trust's work.

Dancing frogs and artful entrances

Watch out for the dancing frogs and artful entrances that have been created on Sheffield Wildlife Trust's urban nature reserves as part of the Urban Nature Reserves Interpretation Project funded by the Big Lottery Fund's Awards for All.

Attractive fencing to improve the appearance of the Fishponds Road entrance is now in place at Carbrook Ravine. Woodthorpe Youth Group and Campbell Design Ltd worked together on the art work for the new entrance, which depicts creatures found on the nature reserve.

New interpretation leaflets for Sunnybank, Crabtree Ponds, Salmon Pastures and Carbrook Ravine are now ready to download from our website and paper copies will be available soon. Pupils from Owlter Brook Nursery and Infant School helped with the artwork for the leaflets by drawing creatures found around the reserves.

Sunnybank Nature Reserve has a new dancing frog sculpture designed by local artist Robin Dobson and children from Springfield Primary's Project Buzz. The abundance of common frogs around the site prompted the children to pick the frog as their preferred subject. Hop down to Sunnybank's pond and have a look.

Hannah Wittram, Community Wildlife Ranger said, "We'd like to say a big thank you to the artists and young people who helped design and create the interpretation, and to the Big Lottery Fund, Awards for All for funding it. We're really pleased with the results and hope that it encourages people to visit and learn more about the nature reserves."



Carbrook Ravine gates



Carbrook Ravine



Dancing frogs on Sunnybank

Notice of 2011 AGM

Sheffield Wildlife Trust's Annual General Meeting 2011 will take place on the evening of Thursday 29th September at Sheffield Wildlife Trust HQ.

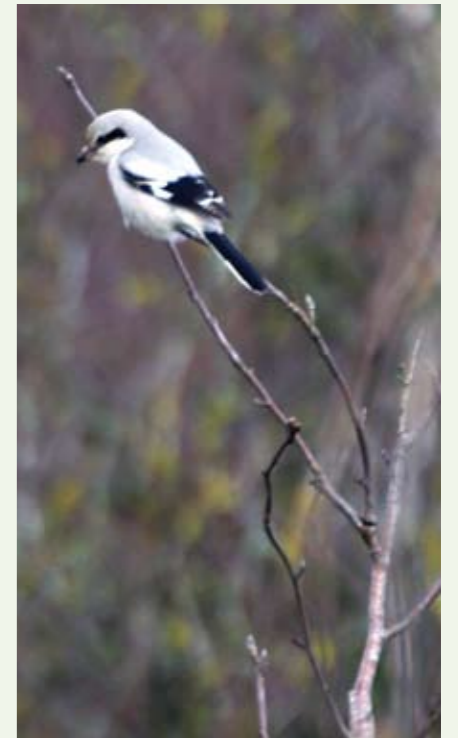
For further information ring 0114 2634335 or email mail@wildsheffield.com

First ever UK sighting of the Great Grey Shrike *homeyeri* at Blacka Moor by James Clark

I've been bird surveying Blacka Moor Nature Reserve for the last three years. It's an excellent site for birding and I've logged 84 species there so far. One species I hadn't seen on the reserve was Great Grey Shrike so in late October 2011 when I heard news that one was around, I made two unsuccessful attempts to see it.

On Wednesday 3rd November I finally managed to see the shrike. I'd seen a few Great Grey Shrikes before and this bird immediately struck me as being a bit odd. I watched it for half an hour and carefully noted the finer details of its plumage. I was still puzzled by its appearance but I was reminded of a picture in the Collins Field Guide of the South-East Russian form of Great Grey Shrike, *Lanius excubitor homeyeri* (known to the Russians as Steppe Grey Shrike). However my initial research at home proved inconclusive.

I posted a note about the shrike on the Sheffield Bird Study Group (SBSG.org) and Sheffield based bird identification expert Martin Garner took an interest. He saw it on 5th November and came to the conclusion that it probably was a homeyeri, a sub-species of bird never recorded in Britain before. It was last seen on 6th November. Confirmation of the identification was later provided from both Collin's Bird Guide author Lars Svensson and world authority on shrikes, Eugeniy Panov. The record will still have to be adjudicated by both the British Birds Rarities Committee and, as a new type of bird for Britain, the British Ornithologist's Records Committee, but so far things are looking promising. See Martin Garner's website Birding Frontiers.com for a detailed analysis of Steppe Grey Shrike identification.



Great grey shrike *homeyeri* © M Gardner

Ponds across South Yorkshire restored thanks to grant from Biffaward

Over the past 10 months, the South Yorkshire Ponds Project at Sheffield Wildlife Trust has been working to survey and restore ponds across South Yorkshire. The project has been funded by Biffaward, an environment fund managed by the Royal Society of Wildlife Trusts (RSWT), which utilises landfill tax credits donated by Biffa Waste Services.

Ponds have been identified as a habitat for priority action. Many of our ponds are deteriorating in quality, reflecting the national picture of severe pond decline. Sheffield Wildlife Trust has been working in partnership with Pond Conservation on a number of projects over the past three years to map, survey and restore our valuable pond resources. The Biffaward funded project has continued to build on the success of previous projects.

Biffaward provided Sheffield Wildlife Trust with a grant of nearly £50,000 to help with the most

recent phase of the ongoing battle to protect and enhance our ponds. Surveys were carried out on a variety of ponds to provide valuable biological information. This provided an essential picture of the state of the ponds and allowed the Project to carry out practical work to restore the ponds. Ongoing management recommendations have been provided to the owners to ensure that the ponds remain in good quality well into the future.

Ponds that have seen vast improvements as a result of the project include Studfield Quarry pond, Loxley; Sammy Roy's and Crayholes ponds at Buntings Wood, Doncaster; Brancliffe Grange pond, Rotherham and West Haigh Wood pond, Barnsley.

For more information on all the ponds that have been surveyed and restored, visit the South Yorkshire Ponds Project webpage at www.wildsheffield.com



Supported by:



Building Communities. Transforming Lives.

Wildlife on your doorstep!

Wed 23rd March, 12 – 2 pm

Centenary Riverside Lunchtime Stroll

Are you situated near the Riverside Way? Please come for a lunchtime stroll around Centenary Riverside. Get some fresh air and hear all about the interesting nature of the site. The walk will also provide an opportunity to network with other local businesses and learn more about the surrounding local history. So why not join us for 30 minutes, enjoy the surroundings and relax at our new nature park.

Access to the nature reserve is by Riverside Way, off the A6178, Rotherham. Walk across the bridge and meet at the “Steel Henge” sculpture on the right

Sunday 27th March, 12 – 2pm

Family Bike Ride at Greno Woods

Hop on your bike and come along for a gentle bike ride to experience the sights and sounds of Greno Woods. Bring a picnic and we'll stop for lunch and some woodland crafts within the woods. Under-16s must be accompanied by an adult.

Please bring your bike, helmet, suitable clothes and a packed lunch. **This is a bookable event, so please contact Hannah Wittram to book your place by 24th March.**

Meet at: Forestry Commission car park on Woodhead Road, situated between Wharcliffe Woods and Greno Woods, grid reference SK 325 949.

First Saturday of the month, 10am – 3pm

Blacka Moor Volunteer Days

Volunteer days to conserve Blacka Moor Nature Reserve are now taking place on the first Saturday of every month (except the January volunteer day, which will be held on the 8th). Tasks from footpath improvements and access work, to habitat and vegetation management. Warm clothes and sturdy footwear needed, and bring a packed lunch.

Tea and biscuits are provided.

Meet at: Stony Ridge car park (the small car park at the end of the woodland on the A625 Hathersage Road). Grid reference: SK 277 806.



Sheffield Wildlife Trust runs a whole host of events across Sheffield and Rotherham, aimed at helping everyone get the most out of their local environment. Please be aware you may need to book in advance for our most popular events, and there may be a suggested minimum donation which will help us cover the cost of running the event.

- Please wear suitable clothing and footwear, bearing in mind that weather is unpredictable, especially on the larger nature reserves inside the Peak District.
- Please make sure your children are accompanied by an adult, as we are unable to take responsibility for them at events.

Friday 6th May, 9.45am – 4pm

Photography Workshop - Blooming Bluebells & Wild Woodland

Moss Valley Nature Reserve



Join wildlife photographer, Paul Hobson, for tips and practical help on how to capture the beauty of the bluebells and other striking spring flora in this ancient woodland. This workshop is £15 per person, and is suitable for all skill levels.

Please get in touch before 29th April to book a place.

Meet at: Coalpit Wood entrance to Moss Valley Nature Reserve, SK 363 809. There is parking available in adjacent streets, or on the grass verge by the entrance to the reserve.

Contact: Julie Gough on 0114 263 4335

Third Sunday Bi Monthly (May, July...), 10am – 3pm approx

Wyming Brook/Fox Hagg Volunteer Day

Regular volunteer days to conserve Wyming Brook and Fox Hagg Nature Reserves are now being run on the third Sunday of every other month. Tasks vary from footpath improvements and access work, to habitat and vegetation management. Please wear warm clothes and sturdy footwear, and bring a packed lunch. Tea and biscuits are provided.

Meet at: Varies between Fox Hagg and Wyming Brook – please contact Hannah Wittram for details.

Contact: Hannah Wittram on 0114 263 4335

Saturday 14th May, 5 – 7am approx.

Warbling at the Brook Wyming Brook Nature Reserve

You'll have to be up with the larks for this event, but early birds will be rewarded with more than just worms! Join us for a guided dawn chorus walk around Wyming Brook, and hear the different bird species in the wonderful cacophony of the spring-time dawn chorus. **This is a bookable event, so please contact Hannah Wittram to book your place by 12th May.** There is a suggested minimum donation of £3.

Meet at: Wyming Brook car park, off Redmires Road, grid reference SK 269 858.



Saturday 21st May, 5 – 7am approx

Blacka Moor Dawn Chorus

Blacka Moor Nature Reserve

It's early-risers only for this cacophonous chorus at the crack of dawn! Join us for a guided dawn chorus walk through the variety of habitats on Blacka Moor, and learn to identify various birds by their song.

This is a bookable event, so please contact Hannah Wittram to book your place by 19th May. For this event, there is a suggested minimum donation of £3.

Meet at: Stony Ridge car park (the small car park at the end of the woodland on the A625 Hathersage Road). Grid reference: SK 277 806.

- Many nature reserves have uneven or steep terrain, and may not be suitable for wheelchair or pushchair users. Please check beforehand if you are unsure.
- Most events can be reached by public transport and are arranged around bus times. For public transport information call Travel Line on 01709 515151
- Photographs may be taken by Trust staff at events and used for publicity purposes. Please speak to a member of staff if you are unhappy about having photos taken.

Unless otherwise specified, please contact our Reserves Team on 0114 2792667/2634335 for further information or to book a place.

Saturday 25th June, 11am – 1pm approx

Woodland Flora and Heathland Haven guided walk

Greno Woods

This event is being run in partnership with the Grenoside Conservation Society From ancient woodland species thriving beneath the trees to heathland species nestled between the woods. Greno Woods has a whole range of interesting flora. Our ecologist will be on hand to help identify and tell you more about the different species we see. Please wear suitable clothing and sturdy footwear, and bring a picnic if you wish to stay for lunch and enjoy the scenery a while longer

Suggested minimum donation of £3 – all donations will go towards the Greno Woods Appeal

Meet at: Forestry Commission car park on Woodhead Road, situated between Wharcliffe Woods and Greno Woods, grid reference SK 325 949.

Sunday 3rd July, 11am – 1pm

Brilliant Butterflies

Carr House Meadows

This guided walk around Carr House Meadows Nature Reserve will be a great chance to spot a variety of beautiful butterflies amongst the fantastic array of wildflowers. Our walk leader will be on hand to help identify and tell you more about the different species we see. Please wear suitable clothing and sturdy footwear, and bring a picnic if you wish to stay for lunch and enjoy the scenery a while longer. Suggested minimum donation of £3.

Meet at: Car park off Carr House Lane, grid reference SK 286 953



Thursday 7th July, 9 – 11pm

Moths and Moons

Greno Woods

This event is being run in partnership with the Grenoside Conservation Society. Do moths really fly towards the moon? Have you ever wondered what's fluttering past you at twilight? Come along to a guided moth walk at Greno Woods and find out. Please bring warm clothes, a torch, and insect repellent. This is a bookable event, please book by Monday 4th July.



Suggested minimum donation of £3 – all donations will go towards the Greno Woods Appeal

Meet at: Forestry Commission car park on Woodhead Road, situated between Wharcliffe Woods and Greno Woods, grid reference SK 325 949.

Thursday 14th July, 9 – 11pm

Mysterious Moths

Blacka Moor Nature Reserve

Join Sheffield Wildlife Trust's moth expert for a twilight event at Blacka Moor and discover some of the mysterious moths that live on the reserve. Please bring warm clothes, a torch, and insect repellent.

Suggested minimum donation of £3.

Meet at: Stony Ridge car park (the small car park at the end of the woodland on the A625 Hathersage Road). Grid reference: SK 277 806.

Training courses

Call the Training Team on 2634335 for further information and to book a place.

Tuesday 22nd March

Hedge Laying

One day course for beginners: £99

Learn the ancient art of hedge laying. Learn how to make a living stock-proof barrier from a rough section of thorn hedgerow using basic hand tools. The hedge we create will last for many years.

Monday 28th and Tuesday 29th March

Dry Stone Walling

£120 for two days

Learn how to restore a historic dry stone wall with help from SWT experts. This course is aimed at beginners who want a hands-on learning experience in the basic skills of this craft.

Join us to complete the re-build of a section of dry stone wall, meet like-minded conservationists for a fun and hard working two days to help preserve our walled landscape heritage.



Wednesday 30th March

Woodland Management

Cost £99.00

In this course, you will learn how to:

- use tools and equipment safely,
- identify the area that needs management
- consider different health and safety issues
- prepare trees for felling
- cut the tree with a felling cut or back cut
- deal with hung up trees appropriately
- carry out woodland management to specification, and finish it in a way that fits in with the surrounding environment
- and more...

Starting 24th March 2011

Four-week Cook and Eat course

These courses are run by the Food in Sheffield Programme at Sheffield Wildlife Trust. They involve learning about healthy eating, food labelling, budgeting, and fats, salts and sugars.

These courses are bookable. For more information or to book a place please contact Michelle on 0114 2792664

Education online



You can now visit www.wildsheffield.com to view all that our Education Service has to offer. Sheffield Wildlife Trust's Education Service has been designed to engage children and young people of all ages in outdoor activities and support curriculum teaching and learning. With activities ranging from teddy bear picnics for 3 year olds to stream surveying with GCSE or A-level groups, and including programmes which support all areas of the curriculum, we will have something to suit your school or setting.

The Trust has developed a range of activities which can be based on one of our 12 nature reserves or in your own

school grounds (or local site). We have a large range of equipment to support our visits including field survey equipment. All our activities aim to stimulate the imagination of the children/young people participating and are designed to encourage them to use their own investigative skills to find out more about each topic.

Please support Sheffield Wildlife Trust by promoting these services to your local school.

Take Action: Your local school should have received an email newsletter recently advertising our education services. If your children attend school, please encourage their teachers to book a session or two.

Calling all Owls!

We have secured the opportunity to raise valuable funds for our work at a pre-match collection at Sheffield Wednesday's home match against Swindon Town.

The match takes place on Easter Monday (25th April 2011) at the stadium and we are seeking volunteers to carry sealed collecting buckets and help collect funds from match supporters as they arrive, from 2 hours before kick off. Can you help us? Collectors need to be over 18 and in return for your help you will receive a complimentary ticket to watch the game.

If you would like to pledge your help, please call Nicky on 0114 2634335 or email n.moore@wildsheffield.com

Take Action: Just a little bit of your time is worth a great deal to us. Please consider volunteering to help with the collection at the match day, or with organising at the Sheffield Half Marathon.



© Robert Barker

Recommend a wildlife friend

Members: Ask a friend to join us today, and receive a **FREE** gift!

If you are a member and encourage a friend to join, just fill in your details on this form and ask your friend to complete the rest. When your friend joins us, we will gratefully send you the free Collin's Guide of your choice.

As you know, membership helps us protect Sheffield and Rotherham's wildlife and green spaces for the future and we need your help more than ever. You can recommend more than one friend, just photocopy this form as many times as you like – in fact, why not collect the whole set of 6 books for free!

Membership starts from only £1 per month and your friend can join as a child, a student, an individual, a concession or as a school, company or family. Family members will also receive a fun pack full of things for kids to do.

For further details, visit www.wildsheffield.com today or call our membership team on 0114 2634335

My name
My address
My telephone number
My email address
My membership number (if known)
When my friend named below, joins, please send me my free gift (please choose one)
New Holland Concise Insect Guide <input type="checkbox"/>
New Holland Tree Guide <input type="checkbox"/>
New Holland Garden Wildlife Guide <input type="checkbox"/>
New Holland Bird Guide <input type="checkbox"/>
New Holland Butterfly & Moth Guide <input type="checkbox"/>
New Holland Wildflower Guide <input type="checkbox"/>
Friend's name
Friend's address
Friend's telephone number
Friend's email address
Friend's signature
I am interested in joining and happy to receive membership details from Sheffield Wildlife Trust



Volunteers needed for marathon prep

Sunday 8th May 2011 is the 30th Sheffield Half Marathon and we are one of the benefitting charities for this year's race. We are looking for people to volunteer for the morning ... can you help us? The race starts at 9.30am, but there are lots of things to do before the race begins, and we need people to help the day run smoothly. If you have a few hours to spare and don't mind missing just one Sunday morning lie-in, please get in touch with Nicky Moore as soon as possible on 0114 2634335 or email n.moore@wildsheffield.com

Fantastic Bird watching Day Trips, Photography Workshops and Birding Holidays in the beautiful Peak District and South Yorkshire

Tours led by local Ornithologist Jim Clarke

To book or for further information visit our website at

www.peakdistrictbirdingholidays.co.uk

or call : 07926190863



Blacka Moor update

A new Blacka Moor bridleway

Many moons ago we were approached by horse riders about linking up a couple of bridleways on Blacka Moor to avoid them having to use the main road (Hathersage Road/A625). The section is between Stony Ridge car park (SK 277 806) to the Piper House entrance (SK 283 807). It's only a short section (615 metres) but nevertheless will make a big difference to horse riders and mountain bikers. We've had it open as a concessionary bridleway through the summer months for about 4 years, but it'll soon become a statutory bridleway.

We have submitted a grant application to the Forestry Commission to help us upgrade the route and as stipulated by Sheffield City Council, must surface it accordingly. Indications are that the application has been approved, meaning that work will start in February or March 2011. Access to the woods and car parking will be affected, but only for short periods. It should only be a few days work. It'll look quite stark at first but will blend in within a few months. Thank you to all the horse and bike riders and the walkers who have helped us, and of course to the Forestry Commission and Sheffield City Council for funding the work.

If you'd like more information about the work planned or anything else about Blacka Moor then please get in touch with Annabelle Kennedy (Sheffield Wildlife Trust), 0114 263 4335 or visit us at www.wildsheffield.com

Woodland for wild birds

There has been an alarming decline in the number of woodland bird species in the last 25 years – 20% decline of 33 woodland birds. Why this dramatic change? It's attributed to lack of woodland management, resulting in less variety of species and age of trees.

Fortunately the Forestry Commission and the RSPB are offering help to rejuvenate woodlands for 15 target species.

At Blacka, a programme has been planned for felling small groups of trees, thinning parts of the woodland, coppicing, rhododendron control, and installing bird boxes. We've had advice from the RSPB, Forestry Commission and our dedicated bird surveyor Jim Clarke - usually the first to see any new species arrive (notably the first ever

British record of the Great Grey Shrike, homeyeri see page ...).

The trees being removed are sycamores; their heavy canopy casts deep shade, and opening the canopy to let light through allows tree seeds to establish, saplings and trees to develop, and creates temporary glades (valued by redstarts, tree pipits and lesser redpolls). It may also expose areas of bluebells, which can then flower and seed. Group felling and thinning makes the most of natural processes, resulting in a variety of age structures and species of trees. We'll be creating some standing deadwood to benefit spotted flycatchers, lesser-spotted woodpeckers, redstarts and various tits. We're also hoping to install pied flycatcher boxes, following the success of previously installed boxes.

Whilst only a small percentage of trees will be felled, we anticipate the benefits will be considerable. Jim will

continue to survey the woods, recording the results of the work to inform future decisions.

The alternative is to let nature take its course and not manage them at all. This certainly has its merits, and is exactly what's happening in the majority of the woods. But rejuvenating small, localised areas will help us secure populations of some species.

We're also looking into the use of a heavy horse for moving logs within the woods to reduce the amount of machinery, noise and impact. Access to the woods will be affected, but only for very short periods.

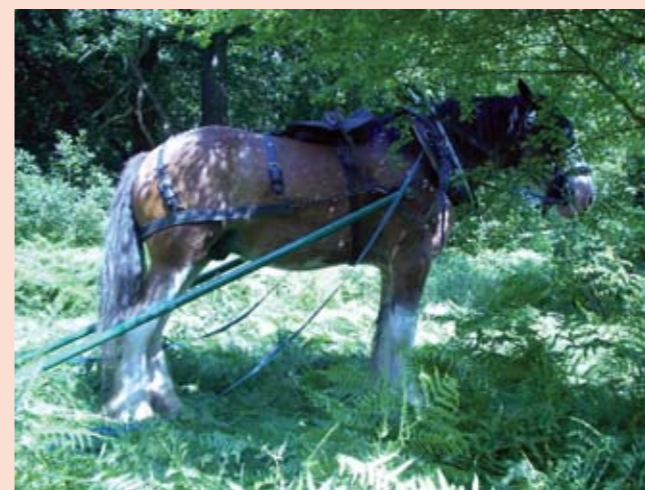
The work is funded by the Forestry Commission and Natural England's Biodiversity Action Fund. For more information contact Annabelle Kennedy 0114 263 4335, or email a.kennedy@wildsheffield.com or visit us at www.wildsheffield.com (minutes of meetings are on our website).



Spotted flycatcher



Pied flycatcher, nestbox



Heavy horse



Bluebells wood

Greno Woods update

Thank you so much to all of you who have kindly supported our Greno Woods appeal. At the time of publishing we are delighted to report that we have raised £13,302 from your donations. These funds are vital as they will allow us to draw down match funding from major funders such as the Landfill Communities Fund and Lottery. For every £1 you donate we hope to bring in up to a further £9.

If you haven't yet donated then it's not too late - please send a cheque made payable to The Greno Woods Appeal, Sheffield Wildlife Trust, 37 Stafford Road, Sheffield S2 2SF; alternatively, visit our website www.grenowoods.com to make an online donation. It's also a good place to keep up to date with the appeals progress and what's happening at the woods.

Felling and thinning in Greno Woods

Through January and February 2011, the Trust commissioned some tree thinning and felling in the woods. As well as creating much needed clearings that will make the woods more inviting to a variety of wildlife and new growth, the wood from the conifer plantations will be used to provide sustainable heating fuel. Selling the wood as fuel will also provide the Trust with an income to help secure the woods for the future.

Fifty-four hectares were thinned and 0.1 hectares of conifer plantation were felled. Visitors to the woods are asked to have patience with the mess, and to be reassured that it will be cleared up when the work is finished by the end of March.

Steve Peat event

Sheffield's own multiple world cup downhill mountain biking champion Steve Peat helped to organize the city's first official Mini Downhill race, the inaugural Steel City series event, in aid of the Greno Woods appeal. The event was held on the 5th March, with all proceeds of the event going to the appeal. Mountain bikers are keen users of the woods at Grenoside and Steve Peat himself built his skills practising in these woods.

British Orienteering Championships

The British Orienteering Championship 2011 will take place in Greno and Wharnclyffe woods on 14th May. The event is described as 'the orienteering equivalent of the FA cup final'. Everyone is welcome to come and watch and join in the activities. The event will be hosted by South Yorkshire Orienteers.

Take Action: Spread the word. A quick and easy way to do so is to email a link to the Greno Woods website: www.grenowoods.com, or link to it on your Facebook page.



© Paul Hobson

Sheffield's white-clawed crayfish: at risk of extinction

White-clawed crayfish (*Austropotamobius pallipes*) are the UK's largest native freshwater invertebrate and are a keystone species in our freshwater environment. They were once widespread but have been declining since the 1970s due to the introduction of non-native crayfish, pollution, habitat degradation and crayfish plague, and are now an endangered species.

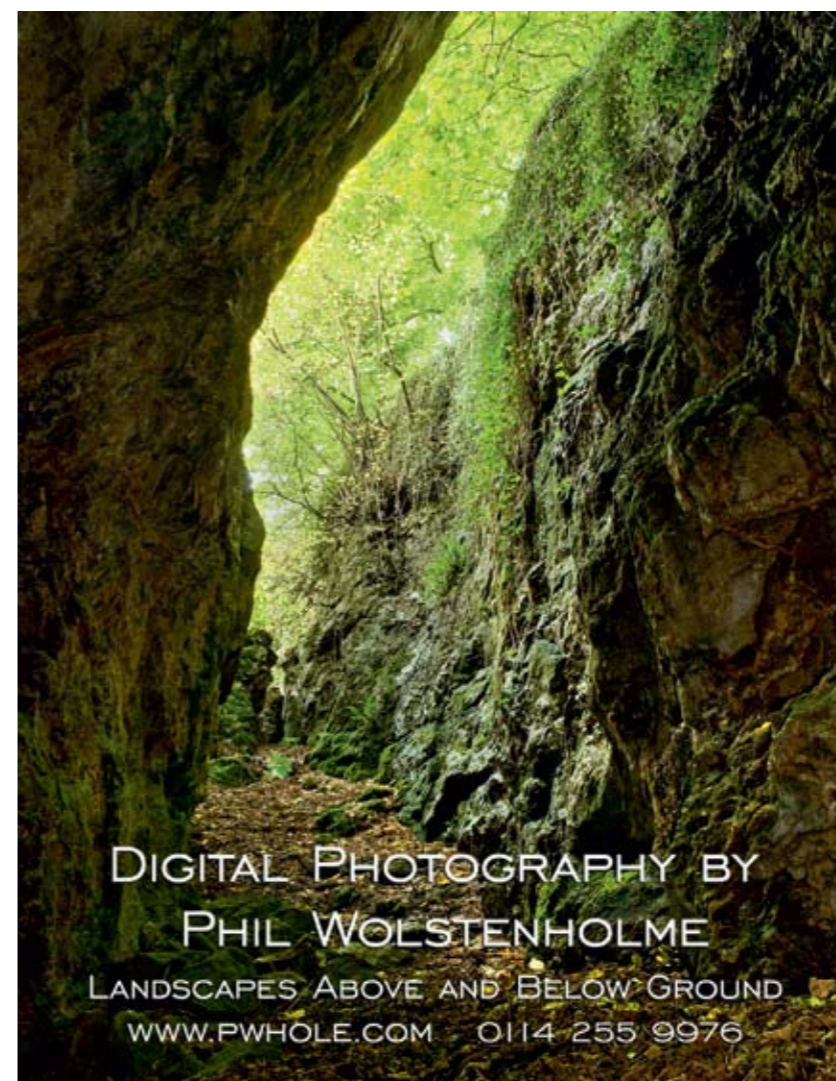
North American signal crayfish (*Pacifastacus leniusculus*) are a non-native crayfish species which has become widespread in the UK due to introductions. Signal crayfish out-compete our native white-clawed crayfish and spread the deadly 'crayfish plague' to them. They can also have a negative impact on freshwater fish and other invertebrates.

Sheffield's white-clawed crayfish, like those across the UK, are at risk of extinction. In 2010 Sheffield City Council's Ecology Unit working in partnership with Sheffield Wildlife Trust and the Environment Agency, secured funding from the Esmée Fairbairn Foundation for a crayfish project to attempt to save Sheffield's white-clawed crayfish. Suzannah Dangerfield, the Project Officer says 'everyone can do their bit to save Sheffield's white-clawed crayfish, following the golden rules will really help secure a future for our native crayfish'.

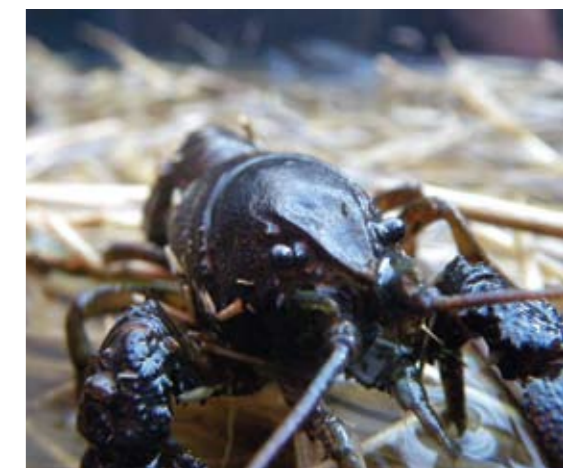
To find out more; look out for an upcoming crayfish page on Sheffield City Council's *Biodiversity Conservation* page or contact Suzannah Dangerfield at suzannah.dangerfield@sheffield.gov.uk.

Golden rules

- ✓ DO: Clean, disinfect and dry boots or any other wet gear
- ✓ DO: Report the keeping of crayfish as aquarium pets
- X DO NOT: Trap, collect or introduce non-native crayfish
- X DO NOT: Trap or collect native crayfish
- X DO NOT: Use crayfish as bait
- X DO NOT: Buy live crayfish



DIGITAL PHOTOGRAPHY BY
PHIL WOLSTENHOLME
LANDSCAPES ABOVE AND BELOW GROUND
WWW.PWHOLE.COM 0114 255 9976



Top right: American Signal crayfish,
Below right native white clawed crayfish
© S Dangerfield

Welcome to the first of three guest articles from the much respected Roger Redfern, mountaineer, photo-journalist, historian and writer.

Here, Roger describes the Rivelin Valley, part of the Western Valleys Living Landscape area.

Roger Redfern on the **Rivelin Valley**

Here, in one of Hallamshire's several beautiful valleys, the Rivelin brook flows down to the east from its peaty birthplace on the crest of Stanage Edge at High Neb. At 1,502ft, this is one of the highest points within any British city, and Sheffield's western boundary runs right across the top of Stanage at this point. The Rivelin is a watercourse (and valley) of two parts, divided by the eastern boundary of the Peak District national park.

Standing on the heathery lump of Round Hill, overlooking the valley's upper, western part, we had the ancient woodland of Oaking Clough behind us, and Surrey Farm fields stretching ahead across the main valley. Despite the proximity of the city's western suburbs, it is a densely wooded valley.

The lower half of Rivelin was industrialised from an early time; by 1770, there were 24 water wheels along this river, driving the grinding hulls associated with Sheffield's edge tool industry. Some of these relics remain, scattered alongside the tumbling river, and embowered by the lush tree growth.

To mark the coronation of Edward VII, one of the grandest road approaches to any British city was created here; Rivelin Valley Road was constructed alongside the river, well over two miles of broad, sweeping highway, lined on both sides by deciduous trees, which have now reached maturity. It is one of Hallamshire's great, unsung urban planning successes, and a lovely approach to this side of Sheffield.

All the high ground surrounding us

up here on Round Hill was once grouse moor but, although still shot regularly each autumn, its glory days of huge bags are long gone. The mossy headwaters basin of the Rivelin brook and its tributaries are now more important as gathering grounds for Yorkshire Water. Walking east from Round Hill, down the birch-dotted side of Reddick Clough, we soon came in sight of the pair of Rivelin reservoirs, constructed to provide compensation water for the river before it flows through Sheffield.

© Roger Redfern, who has generously granted us permission to reproduce it here. Roger is an author and photojournalist who has published many local guides. This piece first appeared Country Diary in The Guardian.



© Roger Butterfield Fox Hagg, Rivelin valley
www.rogerbutterfield.co.uk