



Sheffield & Rotherham

A little egret was seen for the first time at our Woodhouse Washlands nature reserve this spring
(credit - Neil Aldridge)



**Annual
Review**

2016-17

For nature, for everyone

About Us

Sheffield & Rotherham Wildlife Trust is a registered charity and works with the local community towards a better future for wildlife, people and the green spaces we all rely on. We are part of a national network of 47 Wildlife Trusts, working together for a better deal for nature and people locally and in the wider world.

From our CEO

2016-17 has been an exciting year for the Trust as we continue to work towards our vision of a Living Landscape – an amazing green landscape for the wildlife and people of Sheffield and Rotherham, which is understood, enjoyed and cared for by local people and organisations.

Highlights for me include seeing our camera footage of the otters on the River Don and just the sheer number of people who turned out to support our 'Save Smithy Wood' peaceful protest in March. Despite the rain.

As we look to the future, a number of exciting new projects are getting underway, including the Sheffield Lakeland Landscape Partnership and our new Natural Neighbours project which will help connect Rotherham communities with their local green spaces. We also look forward to publishing a 'State of Nature' report for Sheffield next year.

Finally I would like to take this opportunity to say 'thank you' to all our partners, funders, donors, members and volunteers – without your ongoing support none of this work would be possible.


Liz Ballard, CEO



We take care of 15 nature reserves (almost 600 hectares) across Sheffield and Rotherham and work towards creating a network for nature.



Since taking over management of **Woodhouse Washlands** in spring 2016, we have undertaken a major programme of habitat restoration on this wetland nature reserve, improving it for wildlife and local residents.

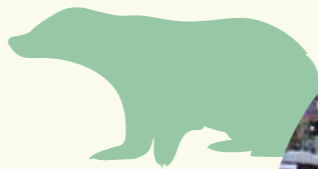
Wyming Brook once again received a prestigious Green Flag Award – the mark of a quality park or green space.

Following work to re-wet the site at **Kilnhurst Ings**, snipe overwintered in record numbers and we recorded first records of black-tailed skimmer dragonfly as well as two little egrets.

We recorded signs of otter along the length of the River Don through our **Nature Counts** project.

Above top - Wildflower patch at Woodhouse Washlands (credit Nabil Abbas). Middle - We carried out targeted woodland management for willow tit at Fox Hagg (credit - Adam Jones). Bottom - We spotted more than 15 snipe at Kilnhurst Ings at one stage during December (credit – Rob Miller).

We connect people with the natural world through innovative programmes.



Our **Wild at Heart** programme delivered more than 100 sessions this year, and has helped more than 1,000 adults over 50 feel better through active, natural experiences.

"Wild at Heart helped me lose weight, get balance in my life and improve my mood. It's been great!"

Anne (Wild at Heart photographer)

Our new **Sheffield Teach Wild Network**, delivered in partnership with Learn Sheffield, enables us to share best practice with education professionals and get more kids outside. Since 2015 we have engaged with more than 500 teachers and trained more than 600 student teachers in outdoor learning.

Right - Outdoor learning opportunities thanks to players of People's Postcode Lottery. Far Right - Lily Burton (credit - Charlotte Ansell)



Through our **Wild Play, Wild Side** and schools offerings, we have engaged with more than 3,500 children and young people this year.

"If you have never been to one of these activities I would definitely recommend it because they are colossally amazing!"

Lily Burton (age 9 - pictured opposite below), on Wild Play

We inspire people to take action for wildlife and wild places in their own lives.

In December we put forward 10 positive, practical steps that Sheffield City Council could take to improve the management of Sheffield's **street trees**.



We were invited to brief Sheffield City Council's Economic and Environmental Wellbeing Scrutiny Committee and to meet with Councillor Bryan Lodge on the issue of **flood protection**.

Over 250 people gathered outside Sheffield Town Hall on a rainy day in March at our public demonstration against the proposal to build a major motorway service area on **Smithy Wood**.

We are part of the national **Greener UK coalition**, fighting for nature post-Brexit.

Through our **Nature Counts** project we engaged with over 2,200 people and mapped more than 360 hedgehog sightings.

Above top - We captured footage of otters on the River Don for the first time (credit - Elliot Smith). Above - Save Smithy Wood demonstration. Right - Through Nature Counts we have mapped more than 360 hedgehog sightings (credit - Tom Marshall)



Through our regular e-newsletters and three issues of *Kingfisher* magazine over the year, we keep our 5,700 members and more than 100 volunteers informed.

More than 500 local people signed up to do something wild every day in June as part of **30 Days Wild**.

The future

We look forward to managing our two new nature reserves: **Agden Bog** in the beautiful Bradfield Dale and **Hammond's Field**, which forms a small part of the South Pennine Moors Special Protected Area.

Over five years, our new **Natural Neighbours** project, in partnership with Rotherham Borough Council and other community partners, will enable communities in Rotherham to connect with their local green spaces.

We will produce a **State of Nature** report for Sheffield in 2018, capturing a moment in time to describe the health of our habitats and the extent of our wildlife.

Our new **Sheffield Lakeland Landscape Partnership** development team are now in place, following Heritage Lottery Fund's initial approval of a £2.8 million grant to protect and improve this unique area of the city.



Above - Rich in flora, colour springs forth from purple moor-grass and heath spotted-orchids at Agden Bog (credit - Philip Precey)



Our highlights from 2016-17

Financial Summary

Income
£1,118,615

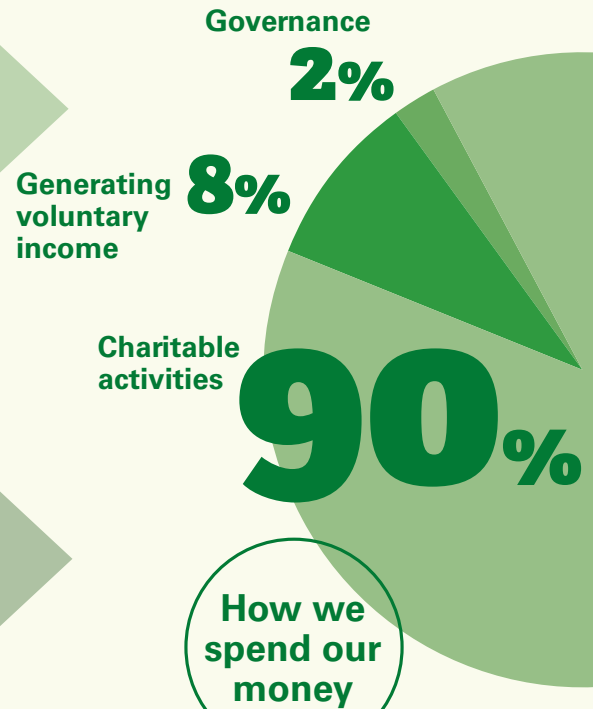
2015-16

Expenditure
£1,161,094

Income
£1,326,119

2016-17

Expenditure
£1,189,978



Thank you to our partners



Our Trustees: Christopher Pennell MBE, Chair • Philip Warren, Vice Chair • David Bird, Treasurer
Tom Dodd • Alice Puritz • Suzanne Leckie • Andrew Parker • Andrew Perrins • Tony Whiting
Frazer Snowdon • Krys Craik • Barry Higgins • Claire Lea



Sheffield & Rotherham

Sheffield and Rotherham Wildlife Trust
37 Stafford Road
Sheffield, S2 2SF
0114 263 4335
mail@wildsheffield.com

🏠 www.wildsheffield.com
📘 **Sheffield and Rotherham Wildlife Trust**
🐦 **@WildSheffield**

Registered charity number 700638 • Company number 2287928