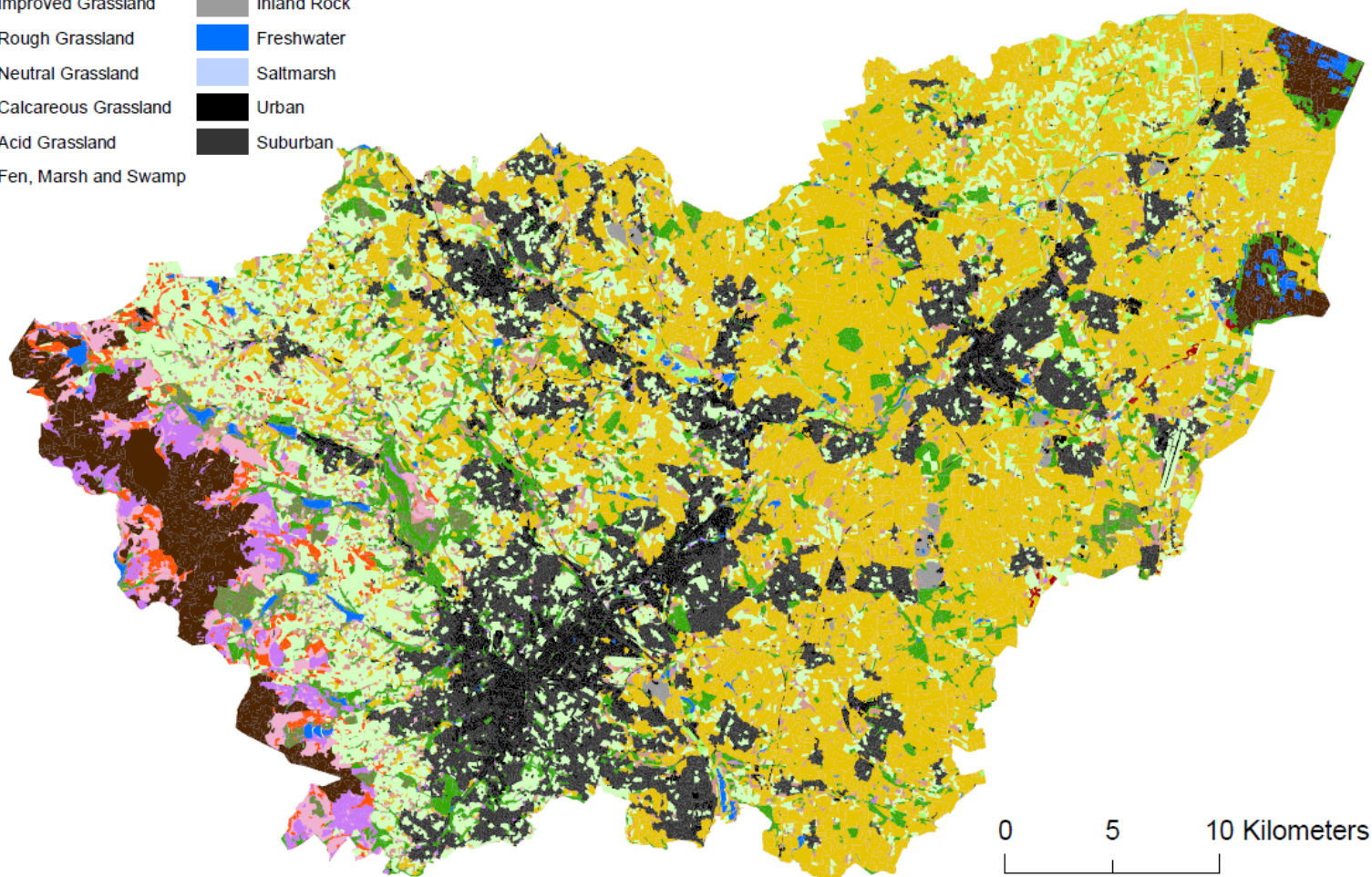








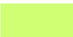








## South Yorkshire land cover (broad habitats)



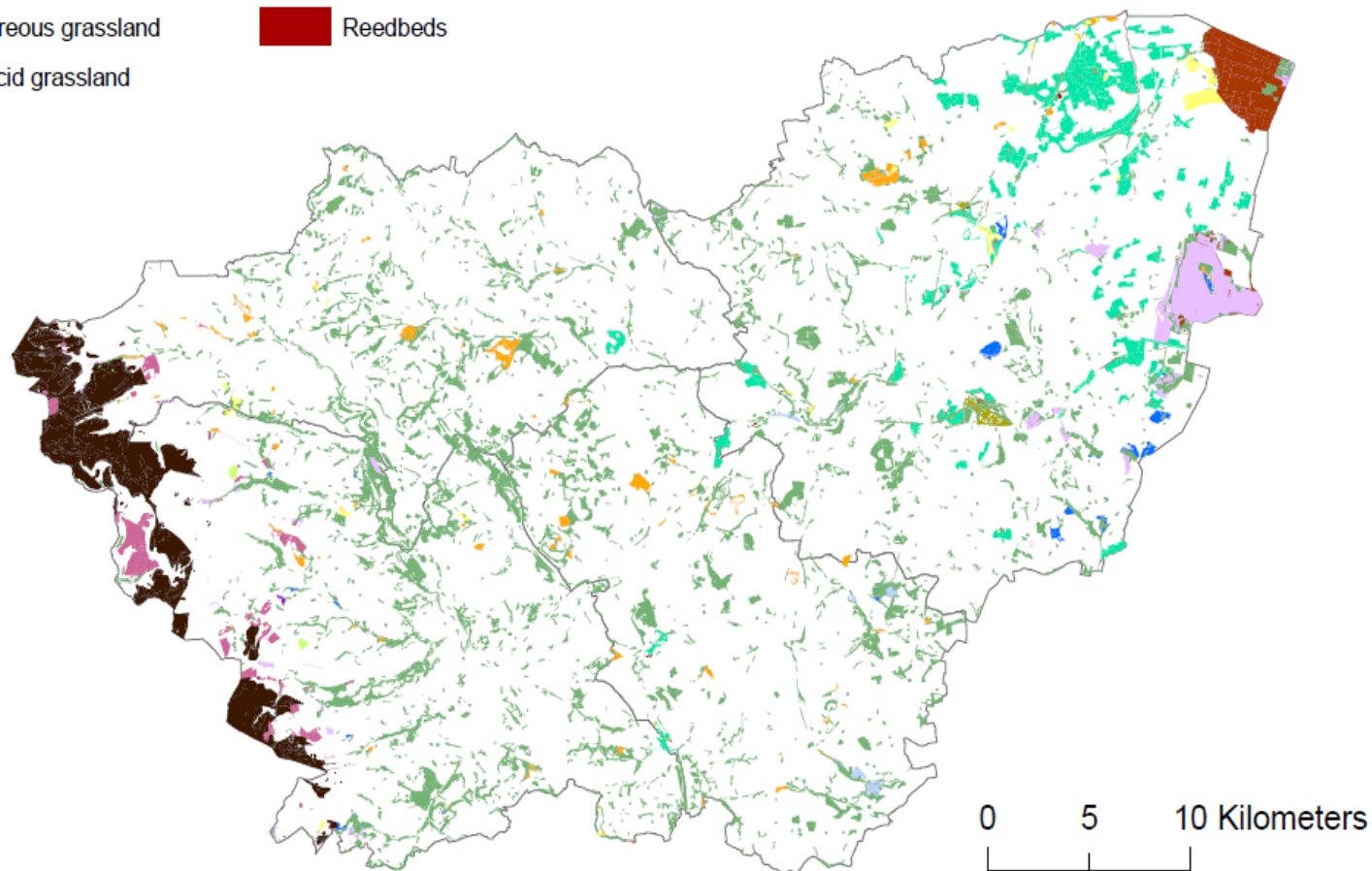
Overall land cover (Land Cover Map 2007) Source: LCM2007 © and database right NERC (CEH) 2011. All rights reserved. © Crown Copyright and database right 2007. Ordnance Survey Licence number 100017572. © third party licensors.

Land cover map 2007	
Main habitat	Area in hectares (% of South Yorkshire)
Acid grassland	2092.35 (1.35)
Arable and horticulture	60345.29 (38.88)
Bog	7680.46 (4.95)
Broad leaved, mixed and yew woodland	12011.65 (7.74)
Built up areas and gardens	29097.01 (18.75)
Calcareous grassland	6.92 (0.00)
Coniferous woodland	2291.12 (1.48)
Dwarf shrub heath	5905.82 (3.81)
Fen marsh and swamp	175.01 (0.11)
Freshwater	1544.26 (0.99)
Improved grassland	25967.07 (16.73)
Inland rock	860.79 (0.55)
Littoral sediment	47.85 (0.03)
Neutral grassland	1646.15 (1.06)
Rough low-productivity grassland	5533.51 (3.57)
<b>Total</b>	<b>155205.26</b>

## Habitat type

	Blanket bog		Lowland fens
	Coastal and floodplain grazing marsh		Lowland heathland
	Deciduous woodland		Lowland meadows
	Fragmented heath		Lowland raised bog
	Good quality semi-improved grassland		Mudflats
	Grass moorland		Purple moor grass and rush pastures
	Lowland calcareous grassland		Reedbeds
	Lowland dry acid grassland		

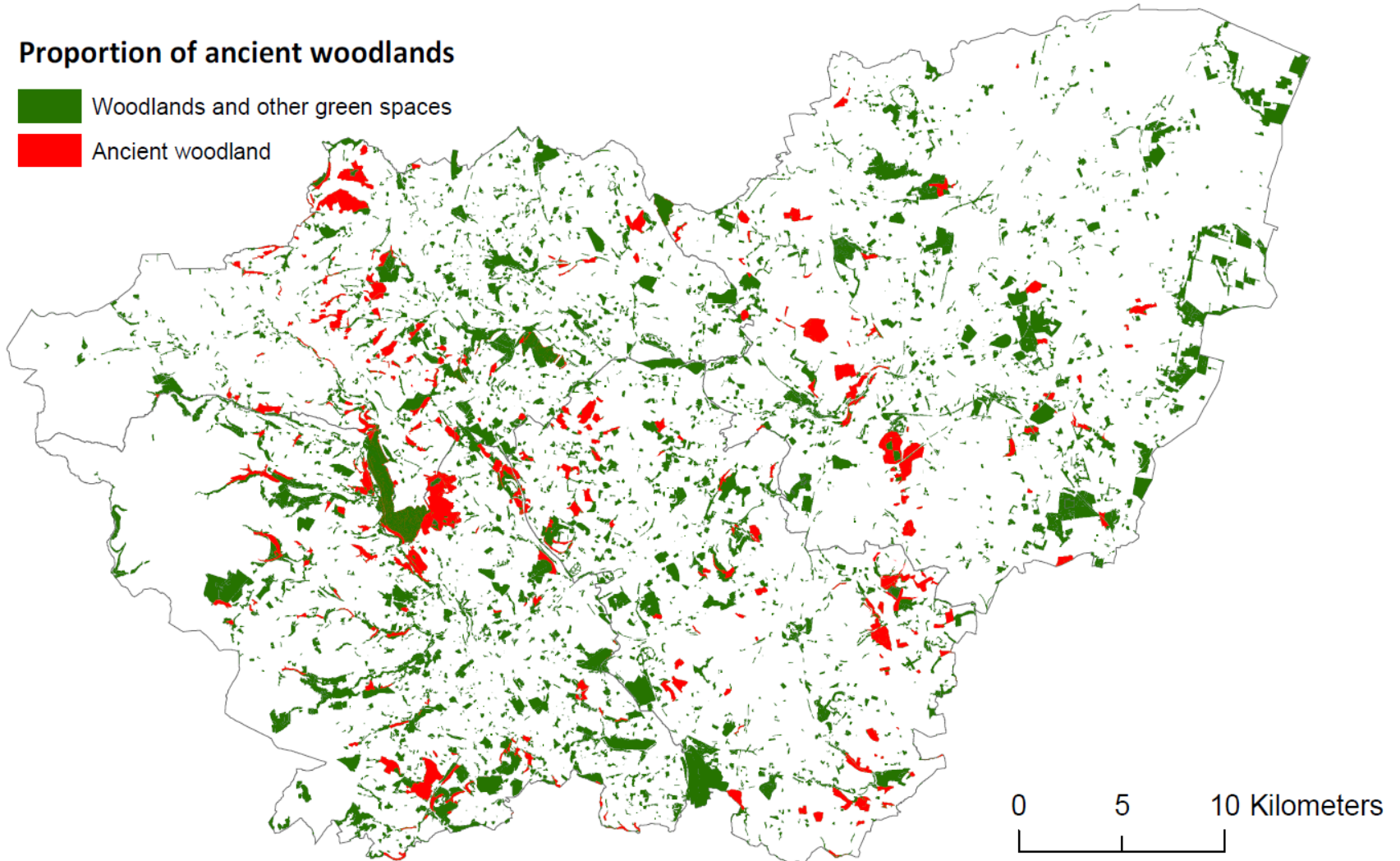
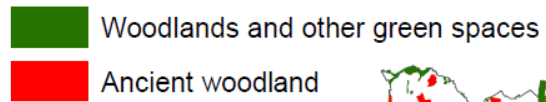
## South Yorkshire priority habitats



Priority Habitat Inventory	
Main habitat	Area in hectares (% of South Yorkshire)
Blanket bog	4446.53 (2.86)
Coastal & floodplain grazing marsh	3264.77 (2.10)
Deciduous woodland	10856.30 (6.99)
Fragmented heath	35.53 (0.02)
Good quality semi-improved grassland	598.89 (0.39)
Grass moorland	676.36 (0.44)
Lowland calcareous grassland	95.94 (0.06)
Lowland dry acid grassland	214.76 (0.14)
Lowland fens	90.08 (0.06)
Lowland heathland	1356.21 (0.87)
Lowland meadows	303.68 (0.20)
Lowland raised bog	1148.31 (0.74)
Mudflats	4.35 (0.00)
Purple moor grass and rush pastures	6.23 (0.00)
Reedbeds	14.75 (0.01)
No main habitat but additional habitats present	1969.53 (1.27)
<b>Total</b>	<b>23112.70 (16.16)</b>

# Woodland and greenspaces

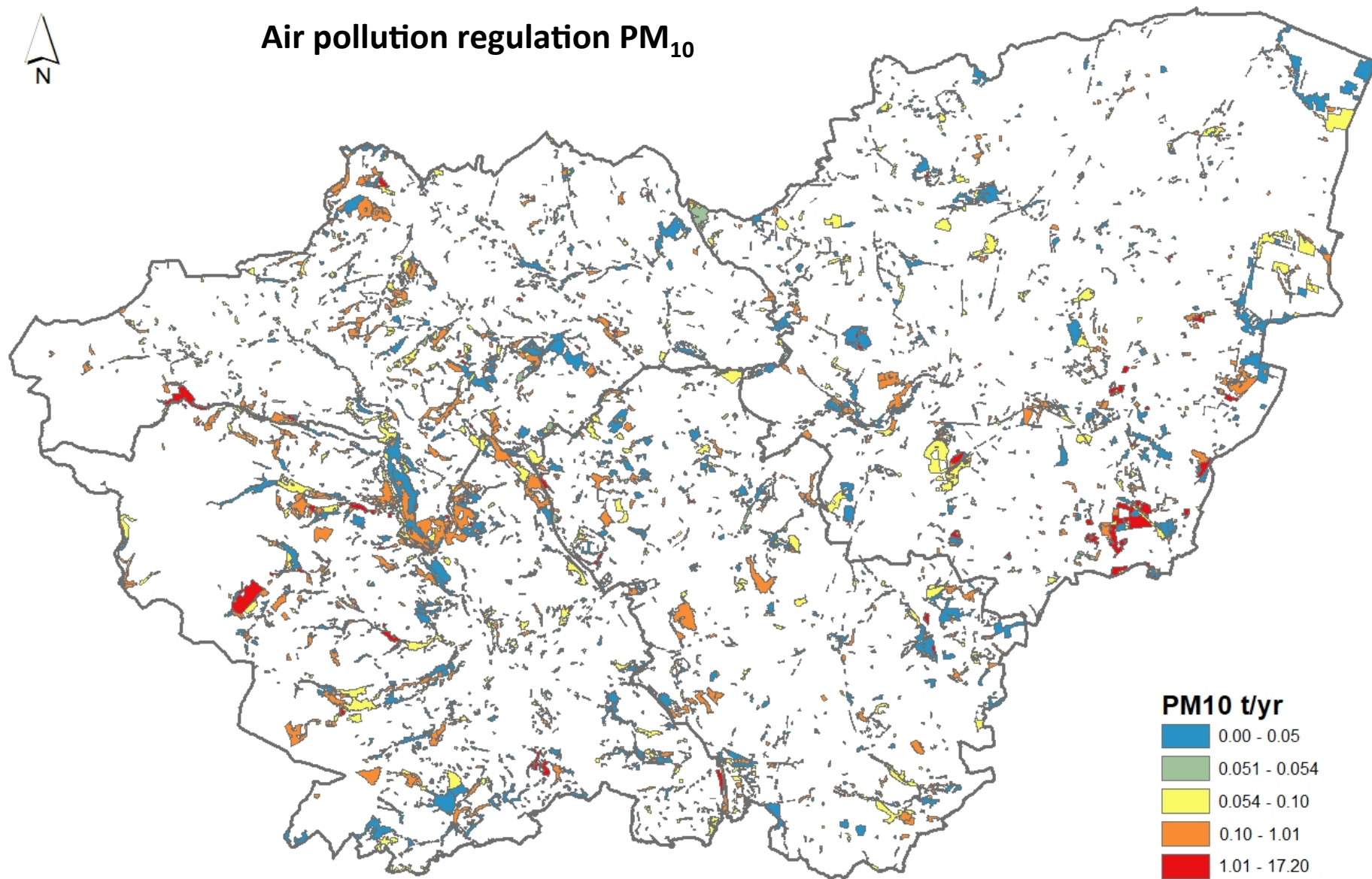
## Proportion of ancient woodlands



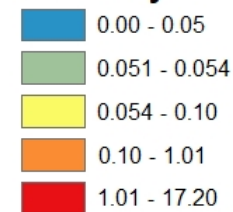




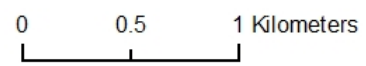
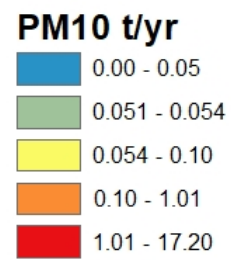
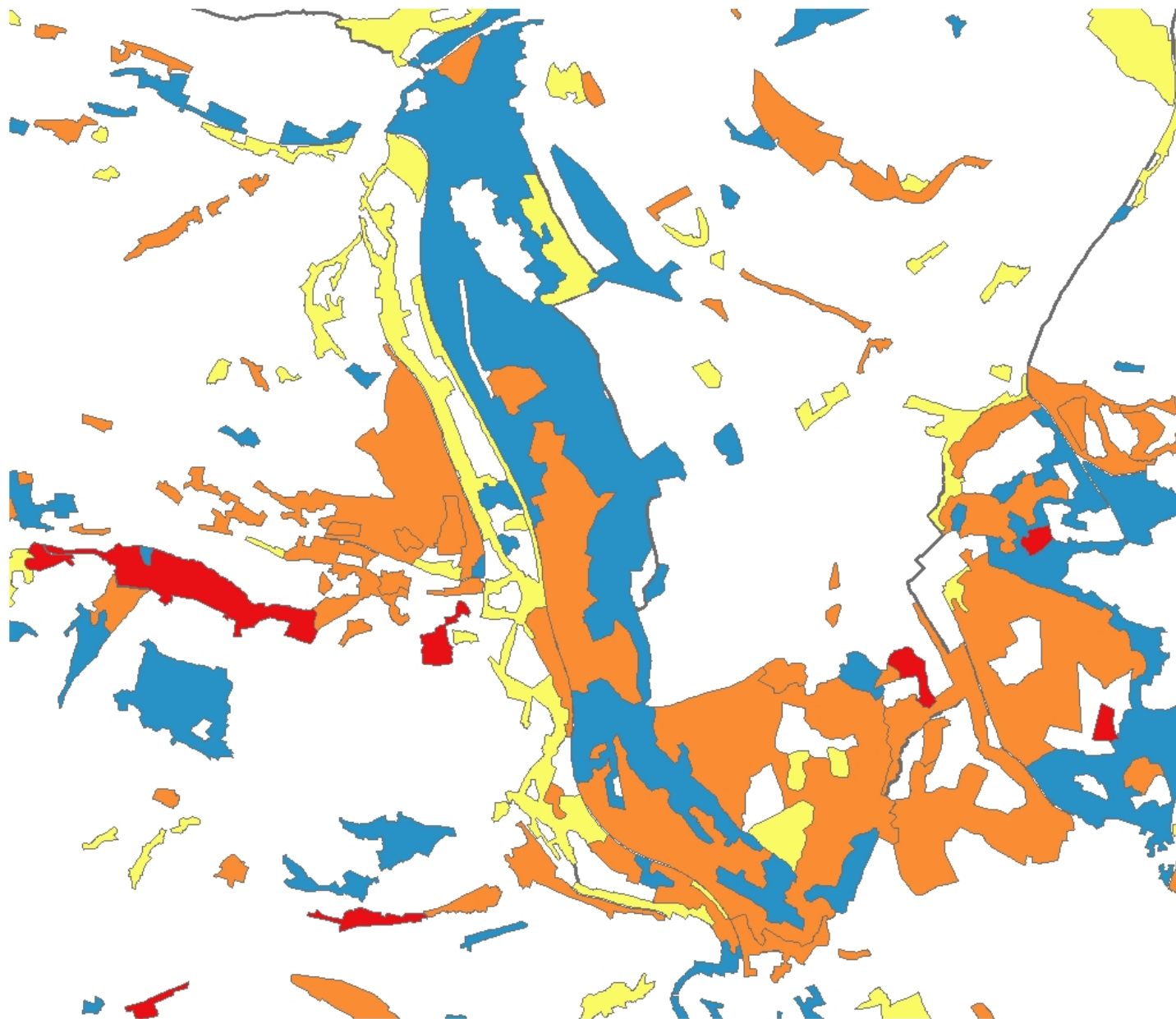
## Air pollution regulation PM<sub>10</sub>



### PM10 t/yr

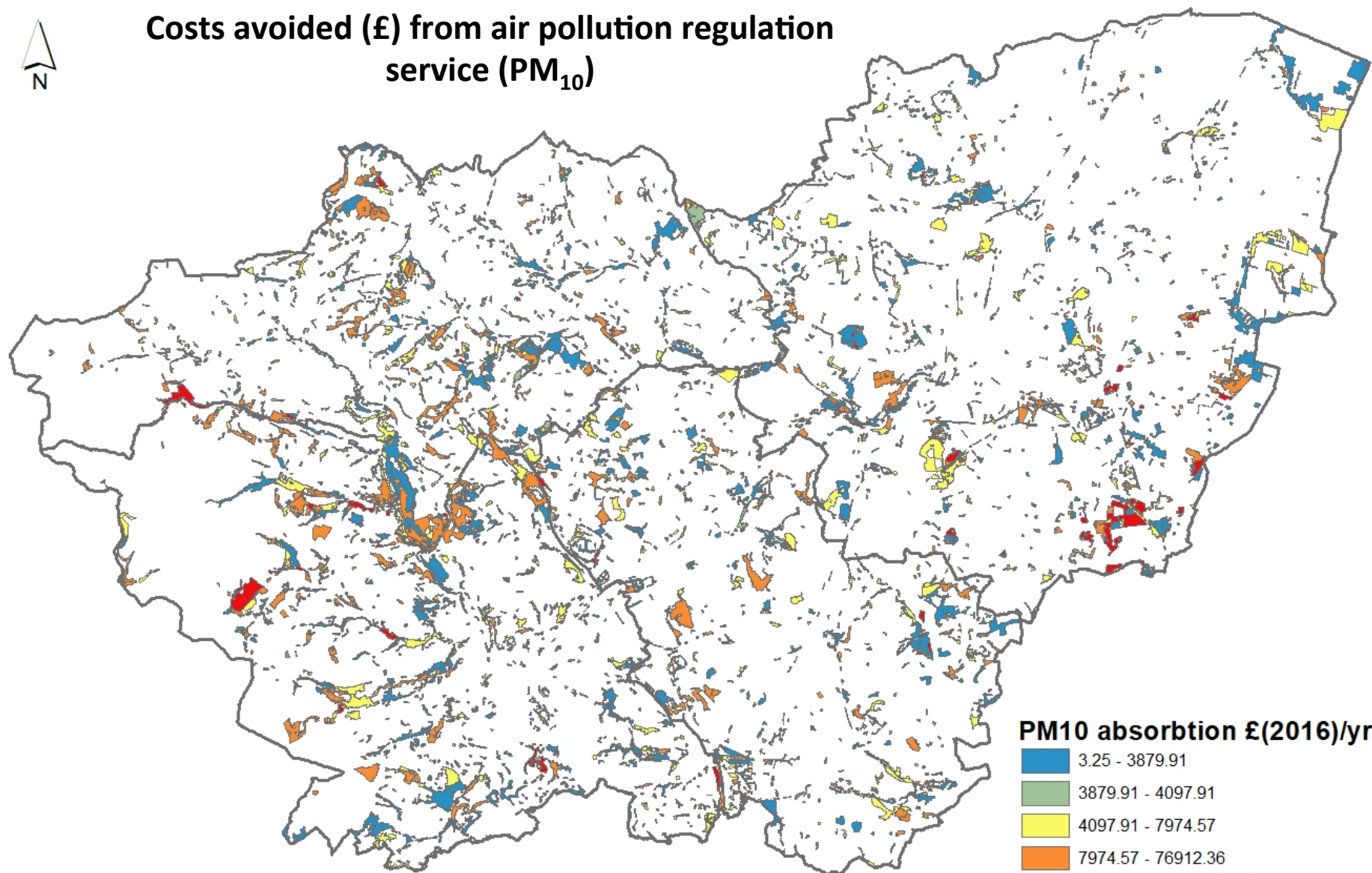


0 5 10 Kilometers





# Costs avoided (£) from air pollution regulation service (PM<sub>10</sub>)



## PM10 absorption £(2016)/yr



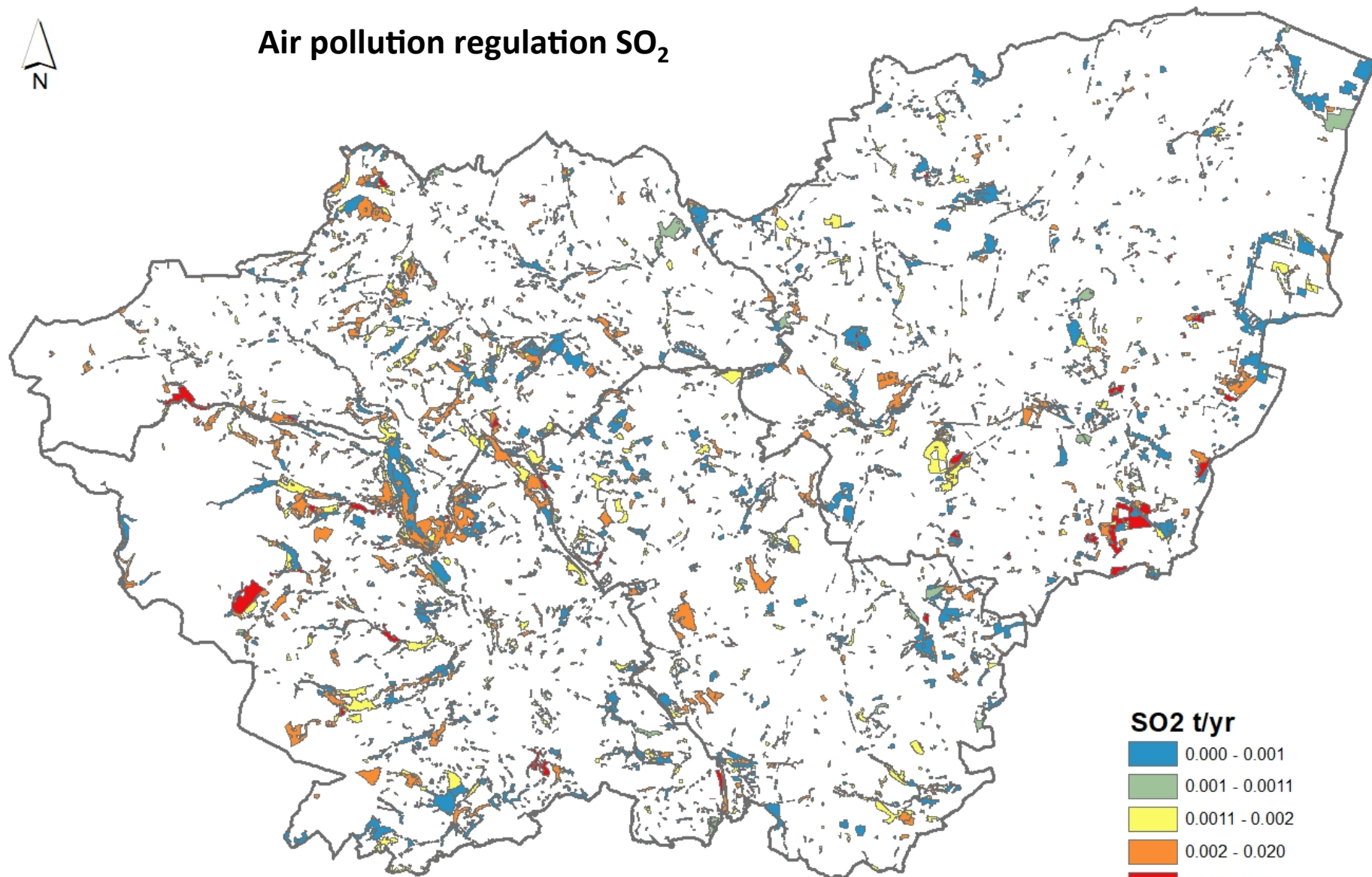
0 5 10 Kilometers



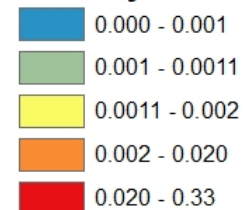




## Air pollution regulation SO<sub>2</sub>



**SO<sub>2</sub> t/yr**

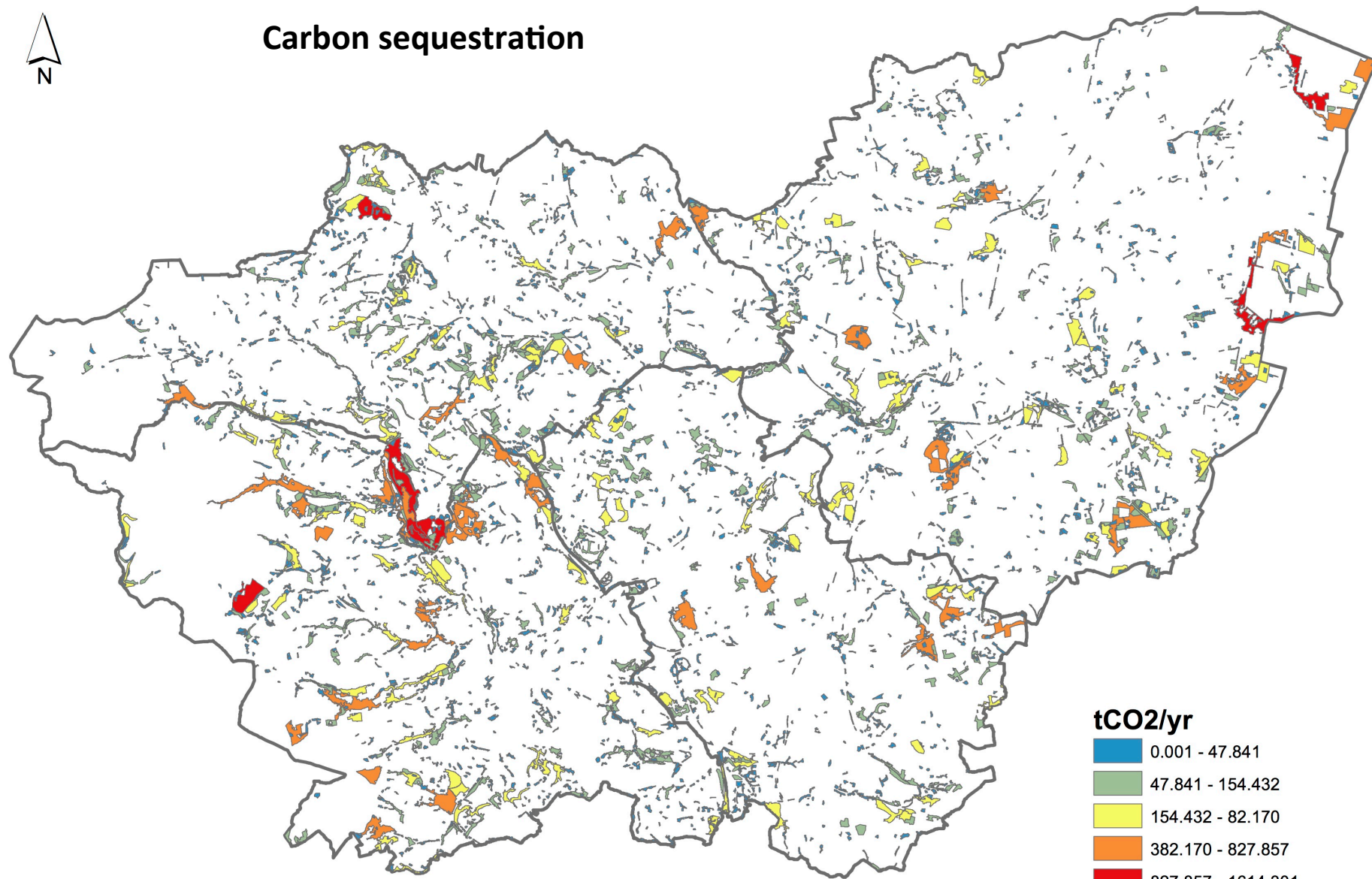


0 5 10 Kilometers

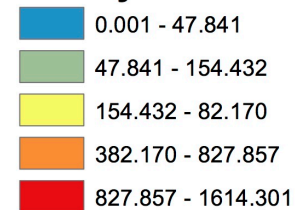




## Carbon sequestration



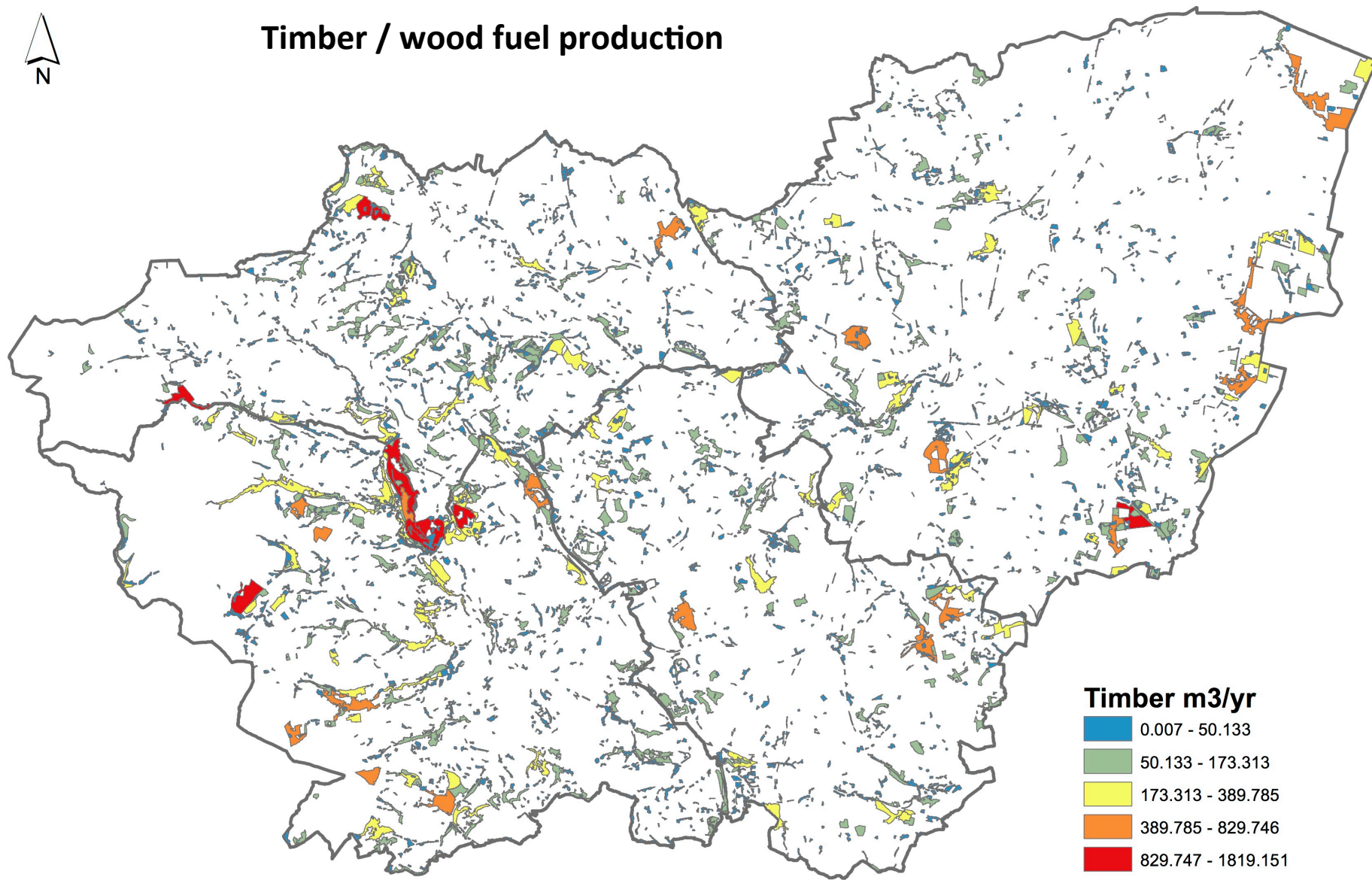
**tCO<sub>2</sub>/yr**



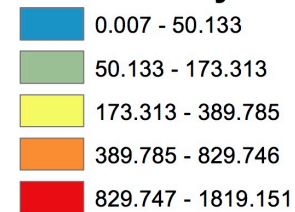
0 5 10 Kilometers



## Timber / wood fuel production



### Timber m3/yr



0 5 10 Kilometers