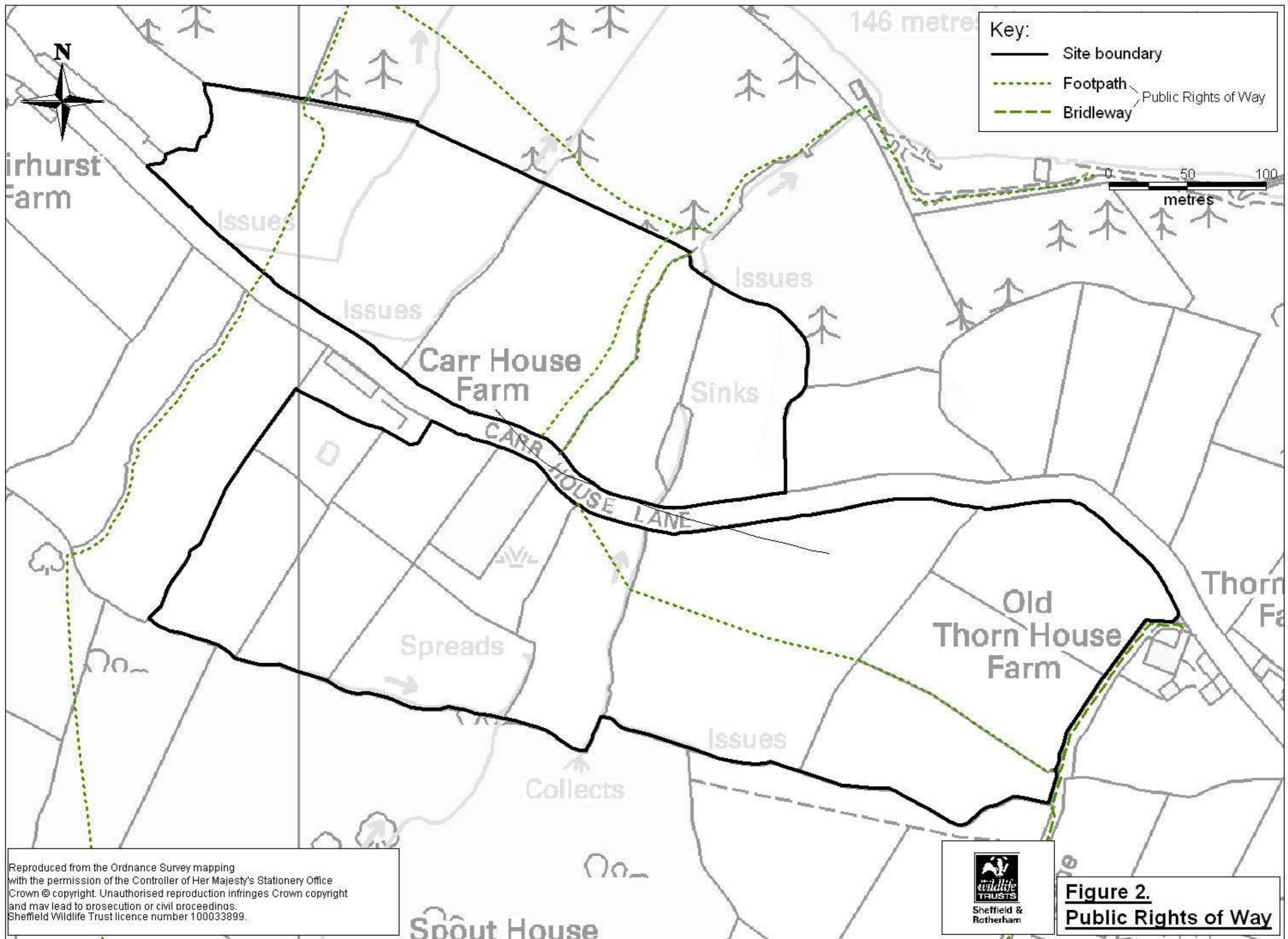


Reproduced from the Ordnance Survey mapping with the permission of the Controller of Her Majesty's Stationery Office Crown © copyright. Unauthorised reproduction infringes Crown copyright and may lead to prosecution or civil proceedings. Sheffield Wildlife Trust licence number 100033899.



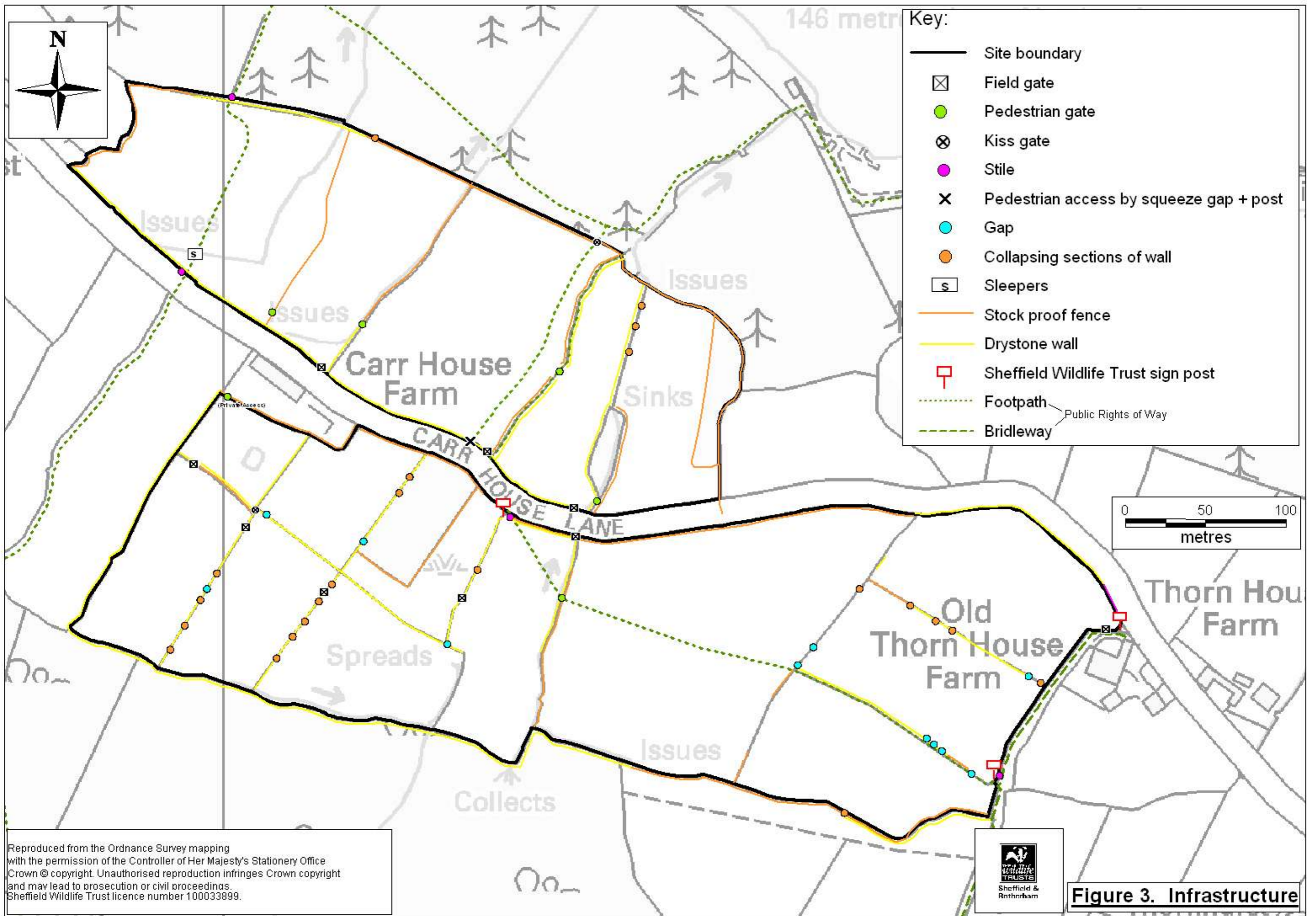
Figure 1. Site Location & Boundaries



Reproduced from the Ordnance Survey mapping with the permission of the Controller of Her Majesty's Stationery Office. Crown © copyright. Unauthorised reproduction infringes Crown copyright and may lead to prosecution or civil proceedings. Sheffield Wildlife Trust licence number 100033899.

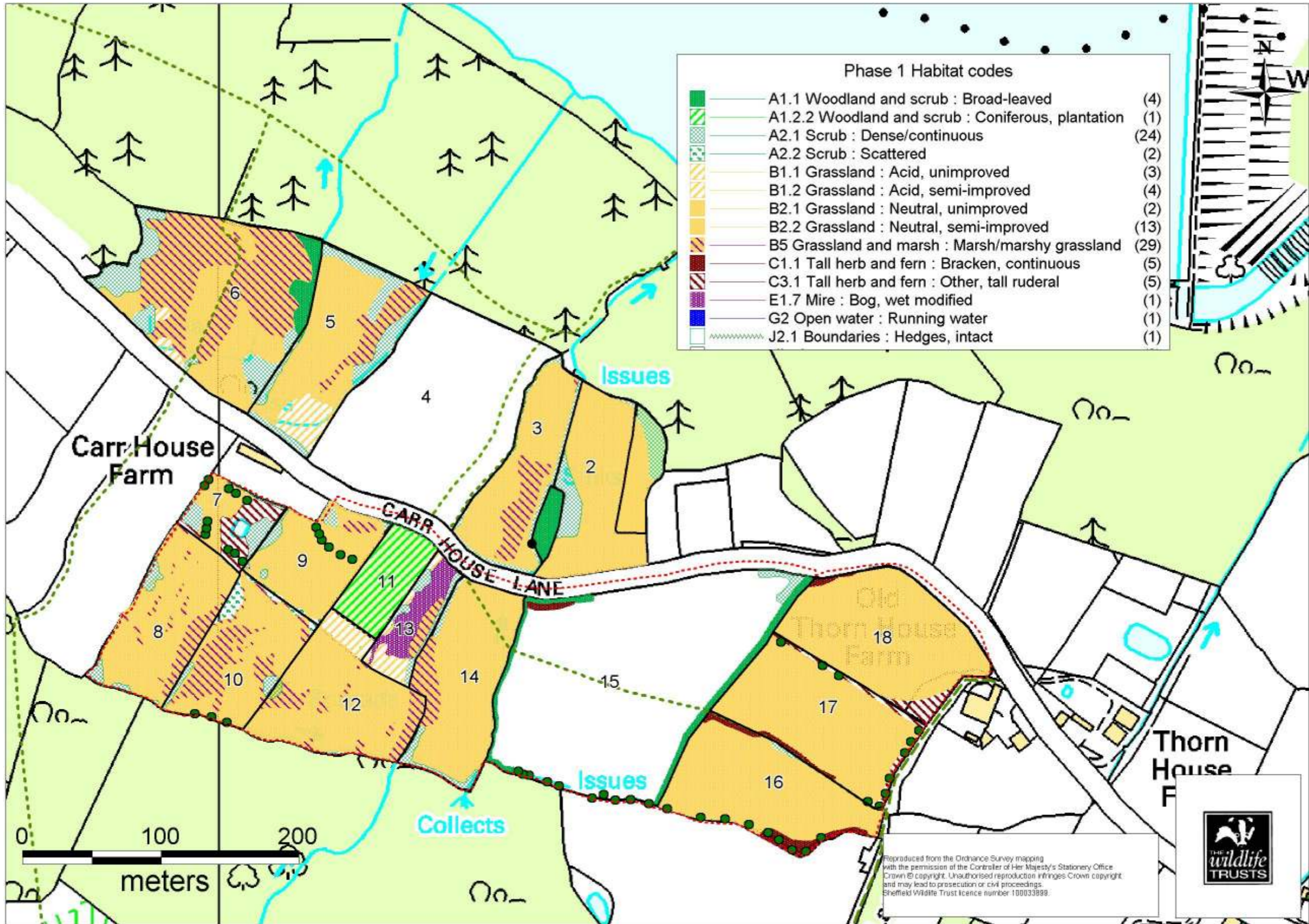


Figure 2.
Public Rights of Way



Reproduced from the Ordnance Survey mapping with the permission of the Controller of Her Majesty's Stationery Office. Crown © copyright. Unauthorised reproduction infringes Crown copyright and may lead to prosecution or civil proceedings. Sheffield Wildlife Trust licence number 100033899.







Key:
 — Site boundary

- MG1 *Arrhenatherum elatius* grassland
- MG5 *Cynosurus cristatus* - *Centaurea nigra* grassland
- MG6 *Lolium perenne* - *Cynosurus cristatus* grassland
- MG10 *Holcus lanatus* - *Juncus effusus* rush-pasture
- U4 *Festuca ovina* - *Agrostis capillaris* - *Galium saxatile* grassland
- W7 *Alnus glutinosa* - *Fraxinus excelsior* - *Lysimachia nemorum* woodland
- W21 *Crataegus monogyna* - *Hedera helix* scrub
- W24 *Rubus fruticosus* - *Holcus lanatus* underscrub
- Ud *Urtica dioica*

0 50 100
 metres

Carr House Farm

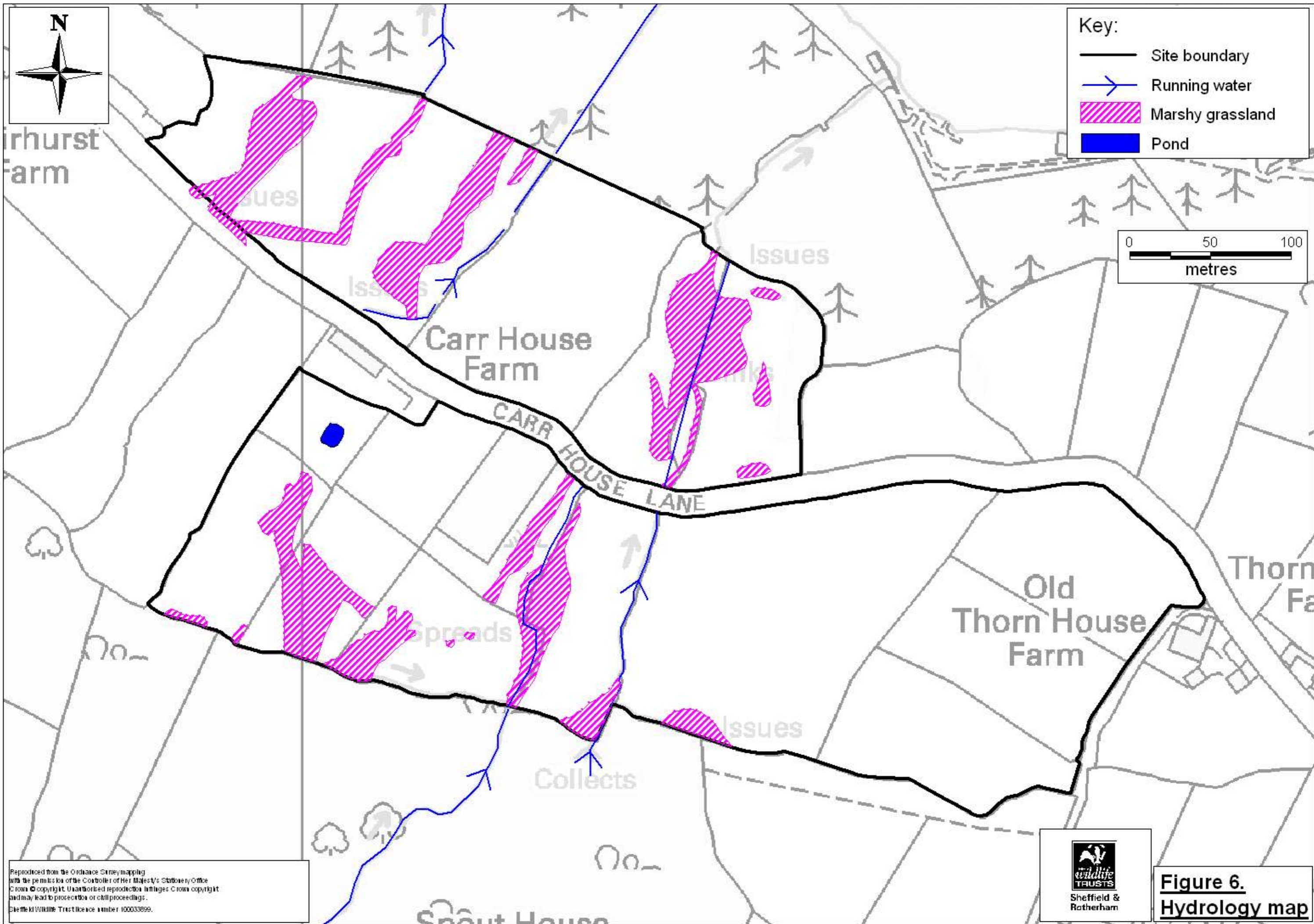
CARR HOUSE LANE

Old Thorn House Farm

Reproduced from the Ordnance Survey mapping with the permission of the Controller of Her Majesty's Stationery Office. Crown © copyright. Unauthorised reproduction infringes Crown copyright and may lead to prosecution or civil proceedings. Sheffield Wildlife Trust licence number 100033899.

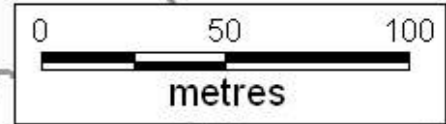


Figure 5.
National Vegetation Classification (NVC) categories



Key:

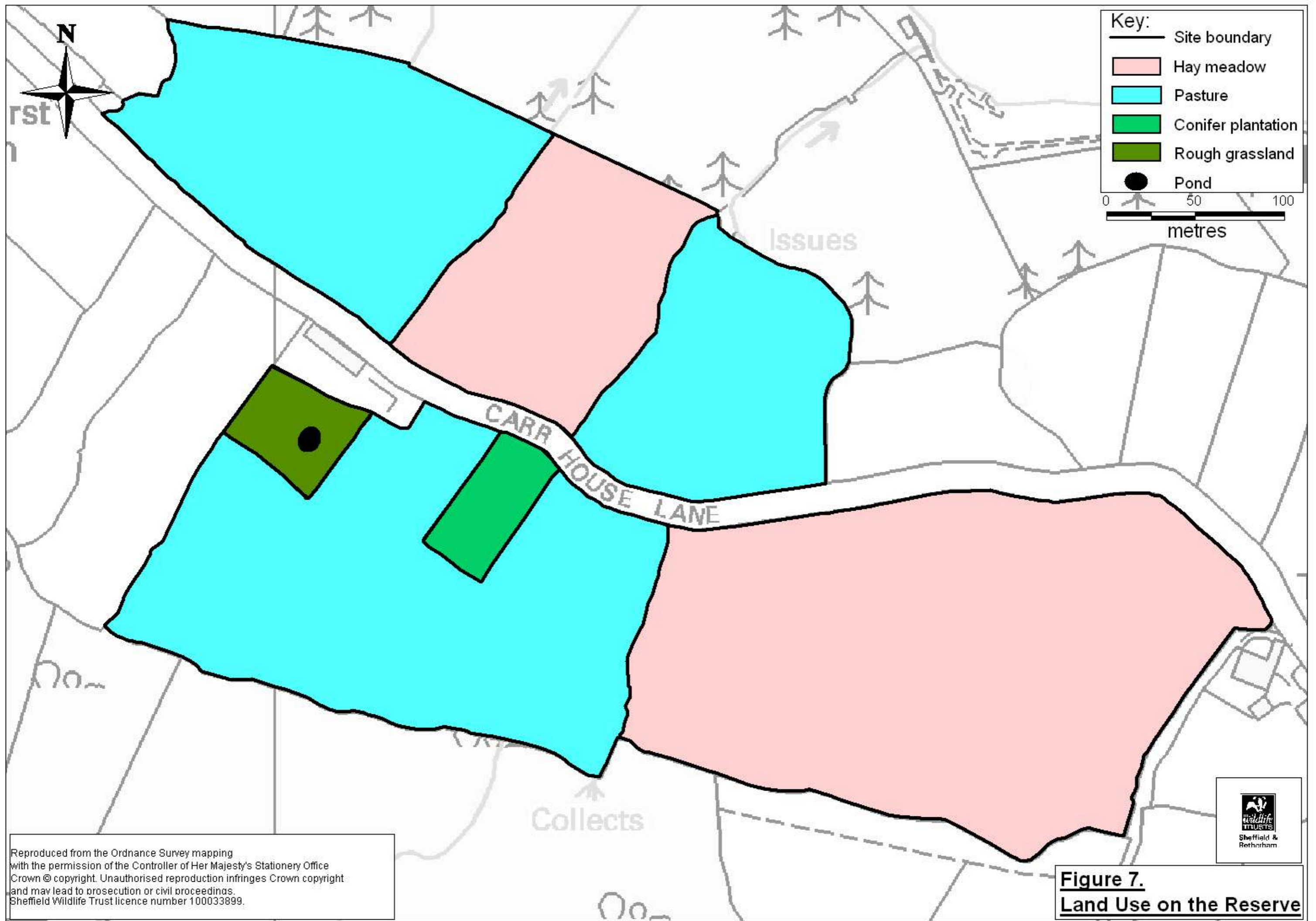
- Site boundary
- Running water
- Marshy grassland
- Pond



Reproduced from the Ordnance Survey mapping with the permission of the Controller of Her Majesty's Stationery Office. Crown copyright. Unauthorised reproduction infringes Crown copyright and may lead to prosecution or civil proceedings. Sheffield Wildlife Trust licence number 100033899.



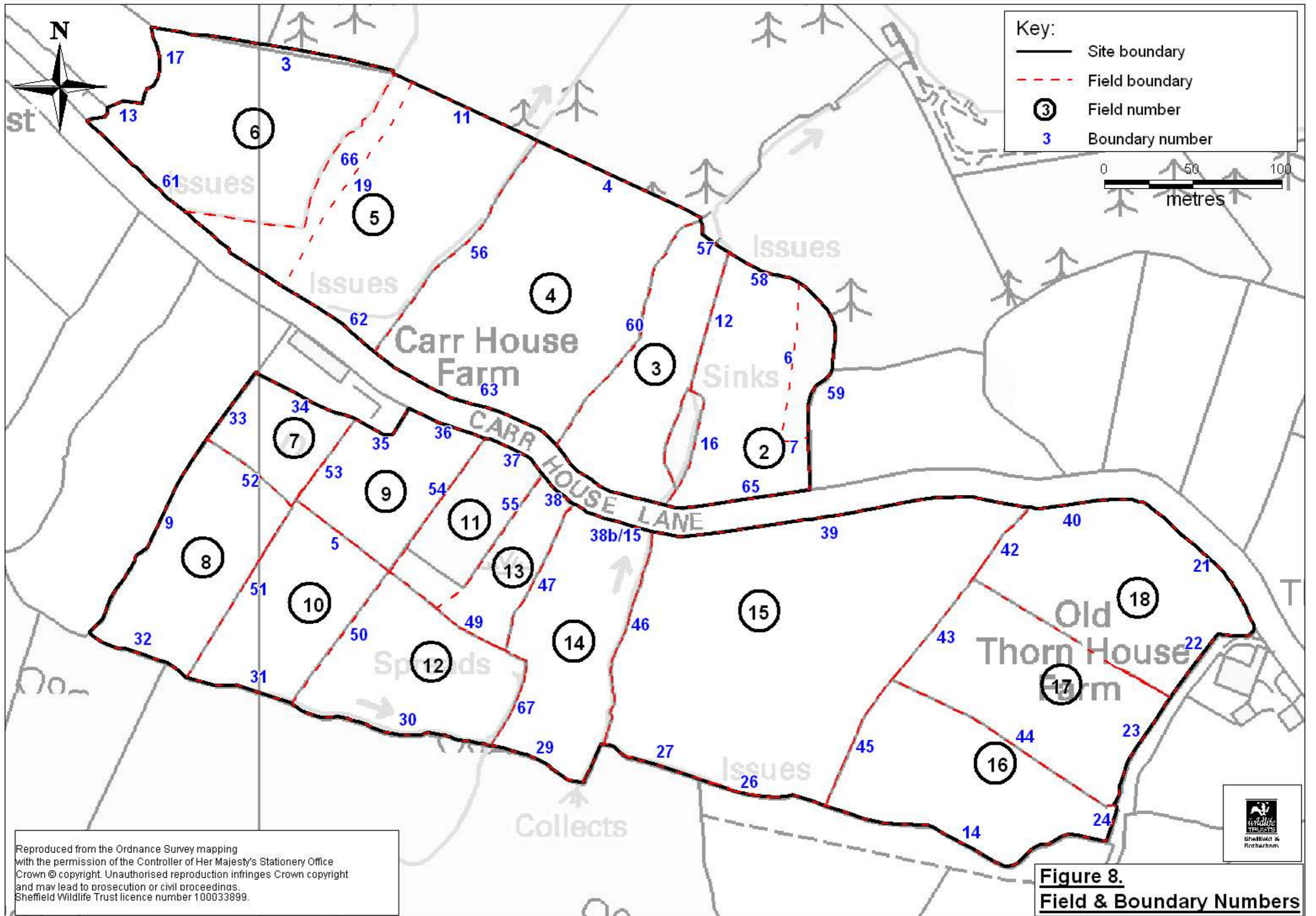
Figure 6.
Hydrology map



Reproduced from the Ordnance Survey mapping with the permission of the Controller of Her Majesty's Stationery Office Crown © copyright. Unauthorised reproduction infringes Crown copyright and may lead to prosecution or civil proceedings. Sheffield Wildlife Trust licence number 100033899.

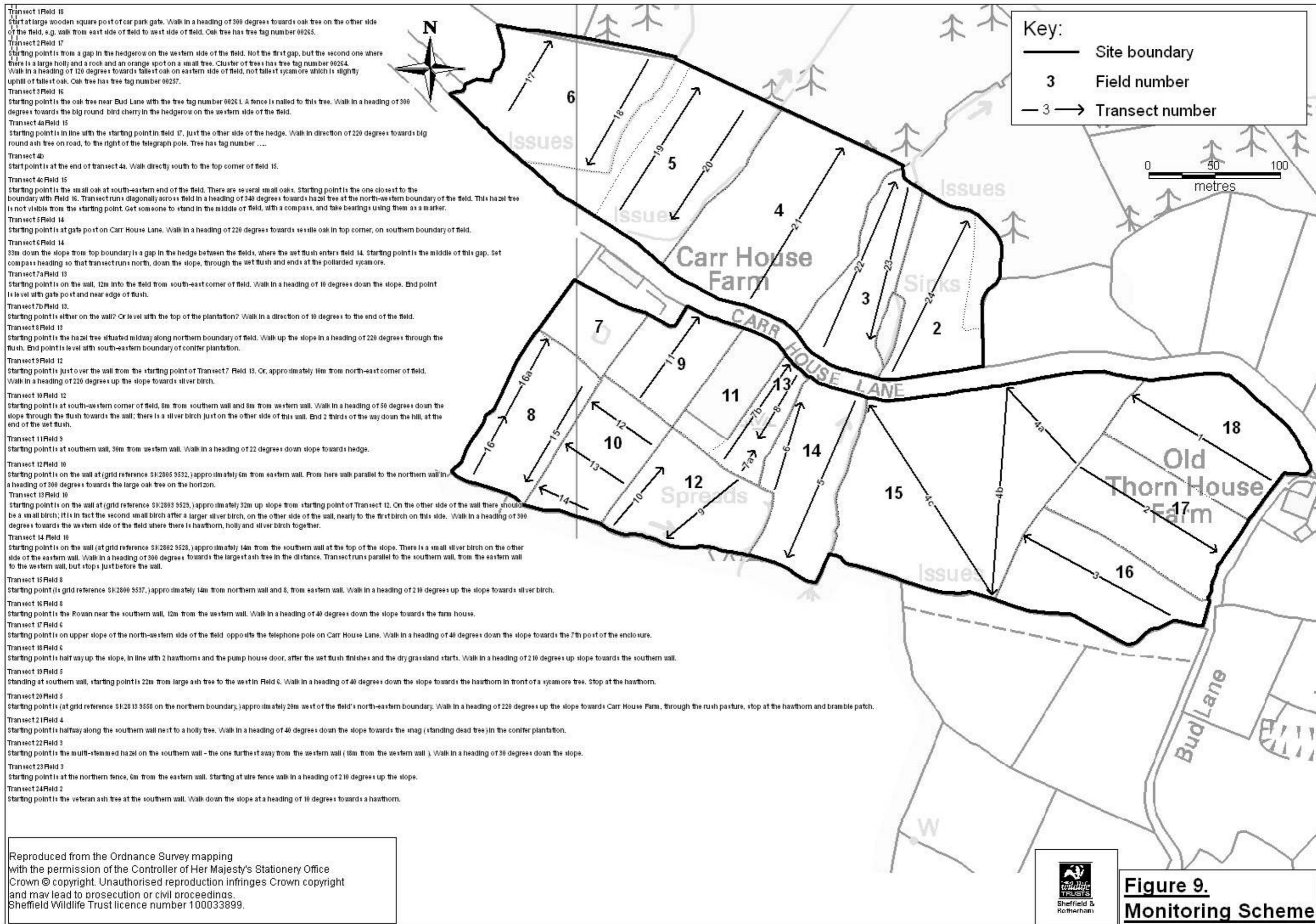


Figure 7.
Land Use on the Reserve



Reproduced from the Ordnance Survey mapping with the permission of the Controller of Her Majesty's Stationery Office. Crown © copyright. Unauthorised reproduction infringes Crown copyright and may lead to prosecution or civil proceedings. Sheffield Wildlife Trust licence number 100033899.

Figure 8.
Field & Boundary Numbers



Reproduced from the Ordnance Survey mapping with the permission of the Controller of Her Majesty's Stationery Office Crown © copyright. Unauthorised reproduction infringes Crown copyright and may lead to prosecution or civil proceedings. Sheffield Wildlife Trust licence number 100033899.



Figure 9.
Monitoring Scheme



Key:
—— Site boundary

0 50 100
metres



Reproduced from the Ordnance Survey mapping with the permission of the Controller of Her Majesty's Stationery Office Crown © copyright. Unauthorised reproduction infringes Crown copyright and may lead to prosecution or civil proceedings. Sheffield Wildlife Trust licence number 100033899.



Figure 10.
Aerial Photograph