

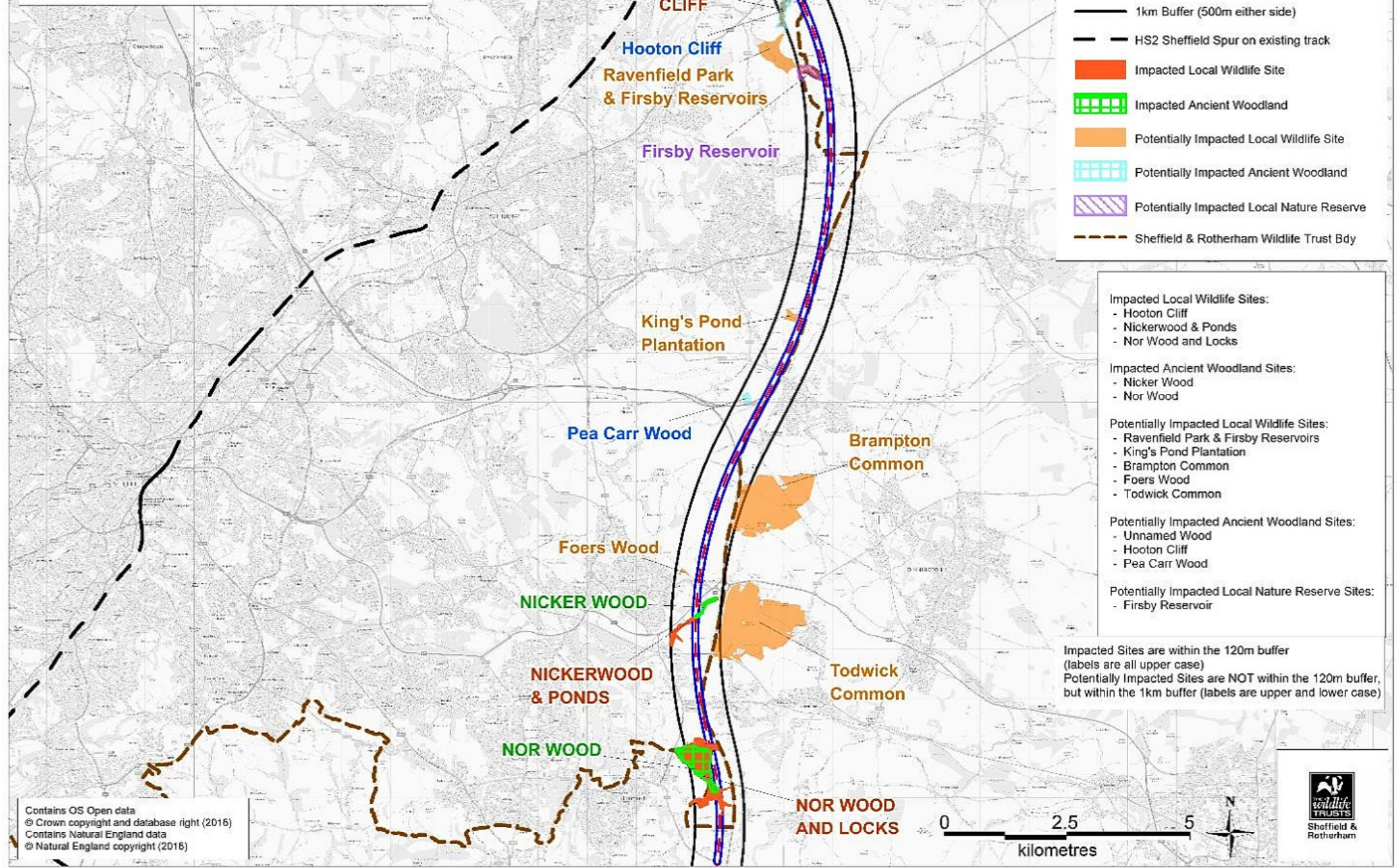
Proposed HS2 Alignments Nov 2016 For Sheffield & Rotherham And the Potential Impacts for Wildlife

Key

- - - HS2 Proposed Main Route Nov 2016
- 120m Buffer (60m either side)
- 1km Buffer (500m either side)
- - - HS2 Sheffield Spur on existing track
- Impacted Local Wildlife Site
- Impacted Ancient Woodland
- Potentially Impacted Local Wildlife Site
- Potentially Impacted Ancient Woodland
- Potentially Impacted Local Nature Reserve
- - - Sheffield & Rotherham Wildlife Trust Bdy

- Impacted Local Wildlife Sites:**
- Hooton Cliff
 - Nickerwood & Ponds
 - Nor Wood and Locks
- Impacted Ancient Woodland Sites:**
- Nicker Wood
 - Nor Wood
- Potentially Impacted Local Wildlife Sites:**
- Ravenfield Park & Firsby Reservoirs
 - King's Pond Plantation
 - Brampton Common
 - Foers Wood
 - Todwick Common
- Potentially Impacted Ancient Woodland Sites:**
- Unnamed Wood
 - Hooton Cliff
 - Pea Carr Wood
- Potentially Impacted Local Nature Reserve Sites:**
- Firsby Reservoir

Impacted Sites are within the 120m buffer (labels are all upper case)
Potentially Impacted Sites are NOT within the 120m buffer, but within the 1km buffer (labels are upper and lower case)



Contains OS Open data
© Crown copyright and database right (2016)
Contains Natural England data
© Natural England copyright (2016)

