



# Wild at Heart

## May Activity Pack

May is here and it's bursting with life. From the trees and plants blooming to the wildlife thriving. The swifts and swallows arriving as blossom trees are rising. An important time of the year to help the mammals, birds & insects that's around us. We can do this by putting out water or food or planting flowers.

In this month's pack we have included a guide to growing an insect friendly garden, along with fun nature crafts, colour wheel nature hunt, spotter sheets, poems, colouring sheets and a yummy Rhubarb recipe.

We hope you have fun with this activity pack, and enjoy spotting the many butterflies that have started to appear.

Enjoy,

[www.wildsheffield.com](http://www.wildsheffield.com)

# NATURE

## COLOUR/COLOR

### SCAVENGER WHEEL



# Wild at Heart

Be wild, whatever your age

## Go on a Colour Wheel Nature Hunt!

Use this Colour Wheel to look at your natural world differently!

### You will need:

- The colour wheel sheet
- Scissors
- Spare cardboard (I use the back of an empty cereal box)
- Glue / Pritt Stick

### What to do:

1. Cut out your **Colour Wheel** with scissors.
2. Using your cut-out colour wheel as a template, cut the **cardboard** to the circular shape of the colour wheel.
3. **Glue** the cardboard onto the back of the Colour Wheel – your Colour Wheel is now ready to be taken outside!
4. Bringing your Colour Wheel, go into a place nearby where there is **nature** – this could be your garden, your local park, a river walk, or trees and flowers growing along your street.
5. Search your chosen natural space and **match** things to the **different colours** of your Colour Wheel – you might find green leaves or grass, brown tree bark or soil, blue sky or berries, yellow flowers or butterflies – just see how many colours **you** can find!

Wild at Heart is funded by the National Lottery Community Fund and the Cadent Foundation

Join us online: [www.facebook.com/WildatHeartproject](https://www.facebook.com/WildatHeartproject)







# Grow an insect-friendly garden

Provide for bees, butterflies and other insects all year round by planting shrubs and plants that flower at different times of the year.

## Spring

Wallflowers   
 Hawthorn   
 Dandelion   
 Sweet William   
 Aubretia   
 Lungwort   
 Sweet Alyssum   
 Cow parsley 

## Summer

Borage   
 Fennel   
 Lavender   
 Rosemary   
 Cornflower   
 Honeysuckle   
 Buddleia   
 Poppy   
 Brambles   
 Cosmos   
 Cow parsley   
 Field scabious 

## Autumn

Heather   
 Carrots   
 Dahlia   
 Mint   
 Marjoram   
 Yarrow   
 Fennel   
 Ivy   
 Michaelmas daisy 

## Key

 Great for honeybees  
 Great for bumblebees  
 Great for butterflies  
 Great for other insects  
 Great for a balcony or plant pot



# Garden Butterflies

Blue campaign—"Rewilding Britain garden, by garden"



1. **Gatekeeper**—Black eyespots on forewings with two white dots in the centre.
2. **Large white**—Bright white wings with black tips. Females have two spots on their forewings whilst males do not. On the underside of their wings they have two spots on a white background.
3. **Meadow brown**— Spots on their wings are more orange than gatekeepers, set against a deep brown coloured wing. Eyespots on wings have a single white pupil compared to the gatekeepers' two.
4. **Green-veined white**—White in colour with dark green bands or 'veins' running along the wings. Upper wings also have one or more spots.
5. **small tortoiseshell**—Distinct orange wings with a black and white border and multiple black spots.
6. **Ringlet**—Chocolate brown/black with black spots on their wings, fringed by a ring of orange with a white spot in the centre.
7. **Red admiral**—Mainly black with orange and red bars. Wings fringed with white with white spots on the forewings.
8. **Comma**—Scalloped-shaped wings with orange/brown coloration. Faint brown and red markings give it a high level of camouflage.
9. **Peacock**—Red with four distinctive multicoloured eyespots on both the upper and lower wings.
10. **Common Blue**—Males are pale blue, while females are more varied, with upper wings ranging from blue to brown.





# Garden Bees

Blue campaign – “Rewilding Britain garden, by garden”

1



2



3



4



7



10



9



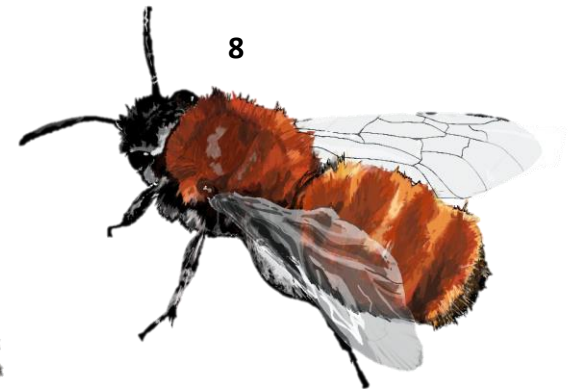
5



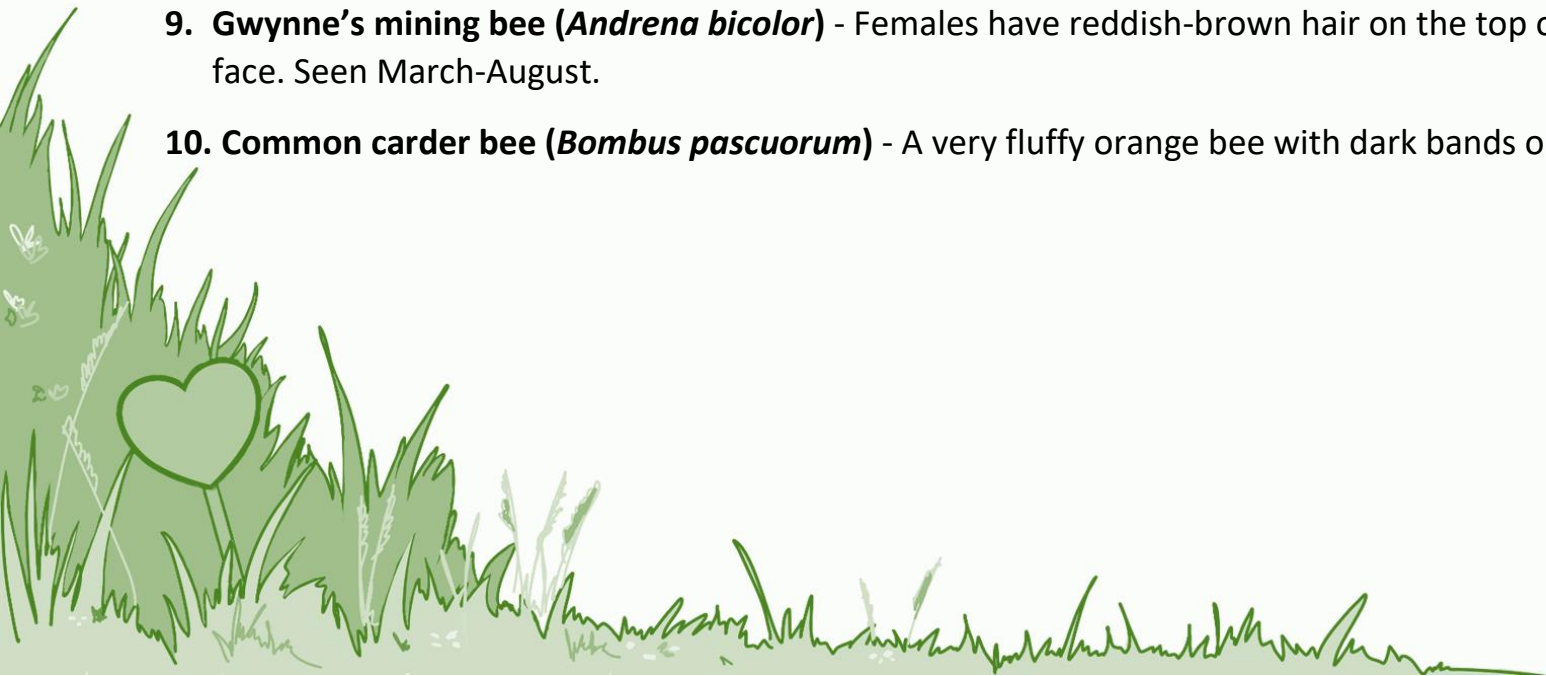
6



8



1. **Tree bumblebee (*Bombus hypnorum*)** - A white tail with a ginger/brown thorax and black abdomen. Seen March-July.
2. **Buff-tailed bumblebee (*Bombus terrestris*)** - Dark yellow bands on the thorax. Queen buff-tails will have the yellow-coloured tail while workers have a white tail. Seen March-August.
3. **Red-tailed bumblebee (*Bombus lapidarius*)** - Females are black with a deep red tail, while males have the addition of two yellow bands on their thorax and one on their abdomen. Seen April-November.
4. **Honey bee (*Apis mellifera*)** - Black and gold banding on abdomen. Seen March-September.
5. **Red mason bee (*Osmia bicornis*)** - Covered in gingery hair. Males can be distinguished by a patch of white hair on their face. Seen March-June.
6. **Patchwork leaf-cutter bee (*Megachile centuncularis*)** – Has a distinctive orange underside to its abdomen. Is often seen carrying a leaf section back to its nest. Seen April-August.
7. **Early bumblebee (*Bombus pratorum*)** - Bright yellow bands on its abdomen and thorax with an orange tip to its tail. Seen March-June.
8. **Tawny mining bee (*Andrena fulva*)** - Both males and females are covered in ginger hairs, however females are larger with a more dense covering of fur, while males sport a white tuft of hair on their face. Seen April-May.
9. **Gwynne's mining bee (*Andrena bicolor*)** - Females have reddish-brown hair on the top of their thorax with a completely black face. Seen March-August.
10. **Common carder bee (*Bombus pascuorum*)** - A very fluffy orange bee with dark bands on abdomen. Seen March-November.





## *The Ballet of Swifts & Swallows*

The eager dances of Swallows flying in erratic playful dives,

competing the ballet of winged pirouettes with excited cries,  
Swifts that scatter in cloudy rain filled skies,

checking in all directions as dust that appears alive to sweet  
sunlight sighs,

A tiny bat hungrily at our heads whispering loudly for its find,

weaving the way through the insect laden murkiness of this  
dusky night,

Geese chattering shrieks pitched ever high,

whilst low searching for the glistening of soft blankets below,

to plough with their feet like gentle snow.

Yes, this is how at day's end I see my 'mind's eye' on this  
cushion glow.



# How to make a forest guardian

wildlife  
watch



## You will need

- A pile of mud (firm mud is best) 
- Sticks 
- Leaves 
- Moss 
- Any other natural decorations you like!



**MUDDY HANDS ALERT!**  
Remember to wash your hands thoroughly after making your forest guardian.



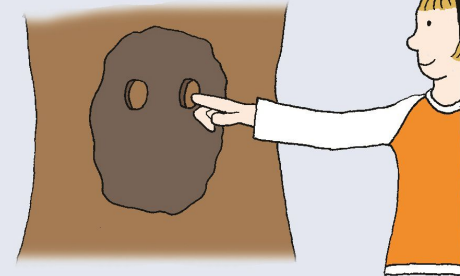
- 1 Pick your tree - choose one that is special to you.



- 2 Use your hands to shape the mud into a face and stick to the trunk of the tree.



- 3 Use your fingers to add a mouth, nose and eyes.



- 4 Press your natural objects into the mud face and decorate your forest guardian!



Illustration: Corinne Welch © Copyright Royal Society of Wildlife Trusts 2017

[www.wildlifewatch.org.uk](http://www.wildlifewatch.org.uk)



# Wild at Heart

Be wild, whatever your age

## Yorkshire Rhubarb Crumble

A homemade crumble that makes the best of Yorkshire-grown rhubarb!

Yorkshire is famous for its rhubarb – at one time, Yorkshire produced almost all of the world's winter or 'forced' rhubarb! Today, Yorkshire still produces most of Britain's rhubarb.

Rhubarb comes from East Asia, but grows especially well in the cold and wet climate of Britain, being harvested in April onwards and is deliciously tart and sour.

In the 19<sup>th</sup> century Yorkshire farmers developed the process of 'forcing' rhubarb – this is ready to eat in January to March, and is much sweeter!

Rhubarb is packed full of vitamin C and fibre, as well as other vitamins and minerals. You can turn your rhubarb into crumbles, tarts, puddings, jams, pickles, or stewed and served on your morning porridge for a healthier option!



Wild at Heart is funded by The National Lottery Community Fund and Rotherham Social Prescribing Service



Join us online: [www.facebook.com/WildatHeartproject](https://www.facebook.com/WildatHeartproject)



# Wild at Heart

Be wild, whatever your age

## Rhubarb Crumble Recipe

Serves 4



### Ingredients:

#### For the rhubarb filling:

- 600g Rhubarb (5-6 sticks)
- 50g Brown sugar
- 75g Stem ginger (Optional)

#### For the crumble topping:

- 110 g cold unsalted butter
- 225 g plain flour
- 110 g brown or caster sugar
- 50 g porridge oats, or nutty cereal

### Method:

1. Pre-heat the oven to 200°C/180°C fan/Gas 6.
2. Slice the rhubarb into 2cm sized chunks. If adding the stem ginger, chop this into small slices or chunks.
3. Put the rhubarb into a baking tray (mine is 25 x 19 x 5 cm) and scatter over the 50g brown sugar. (If using stem ginger, pour 50g of the syrup in instead!)
4. Make the crumble topping: Cut the butter into small cubes. Then using clean hands, rub the butter into the flour until it is all mixed through and looks like moist breadcrumbs.
5. Stir the porridge oats or nutty cereal into the crumble topping.
6. Pour the crumble topping onto the rhubarb.
7. Cook in the oven for 25-35 minutes in the middle shelf until the crumble is golden brown. Enjoy!

Wild at Heart is funded by The National Lottery Community Fund and Rotherham Social Prescribing Service

Join us online: [www.facebook.com/WildatHeartproject](https://www.facebook.com/WildatHeartproject)

# **“Hope” is the thing with feathers**

BY EMILY DICKINSON

“Hope” is the thing with feathers -  
That perches in the soul -  
And sings the tune without the words -  
And never stops - at all -

And sweetest - in the Gale - is heard -  
And sore must be the storm -  
That could abash the little Bird  
That kept so many warm -

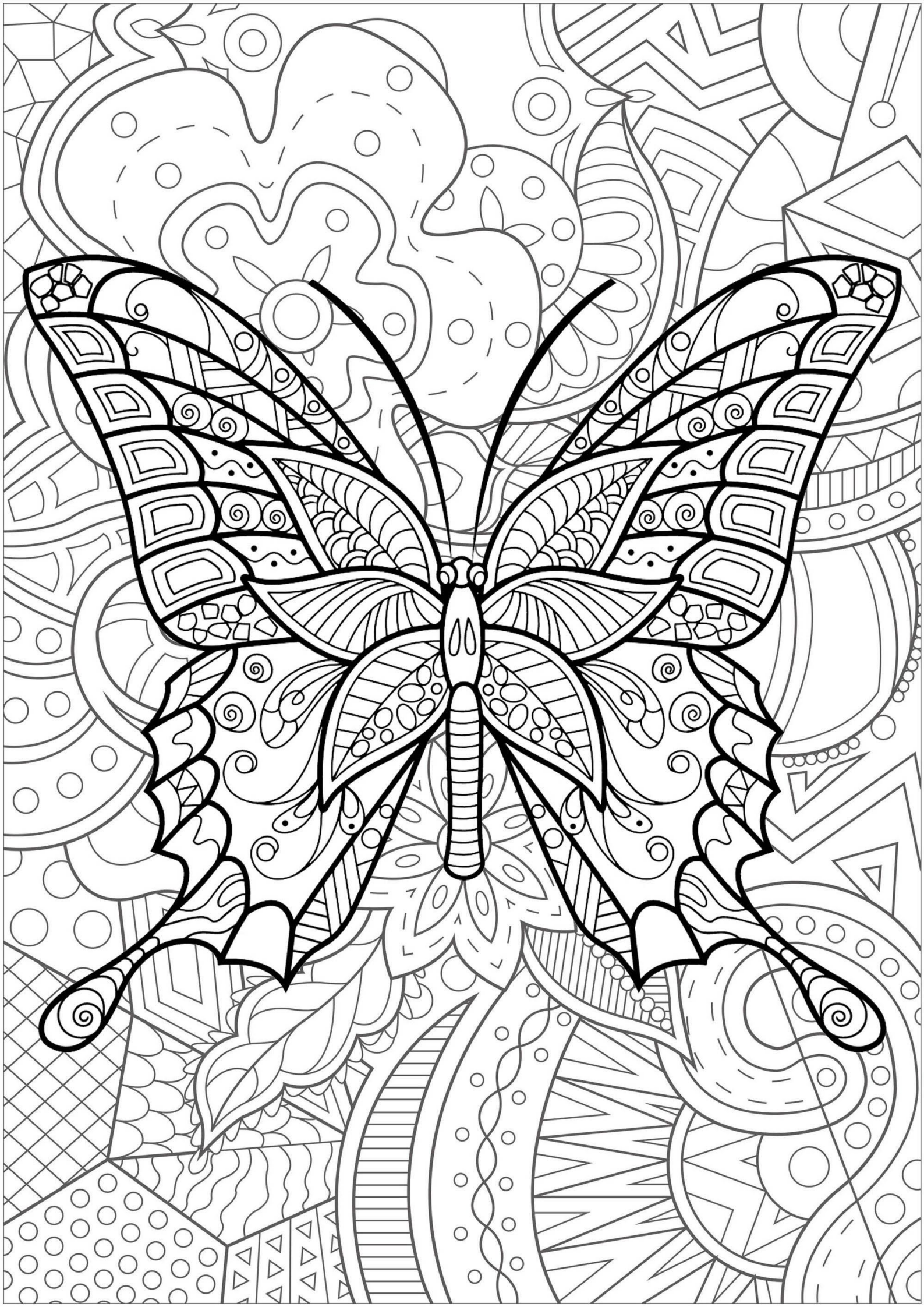
I’ve heard it in the chillest land -  
And on the strangest Sea -  
Yet - never - in Extremity,  
It asked a crumb - of me.



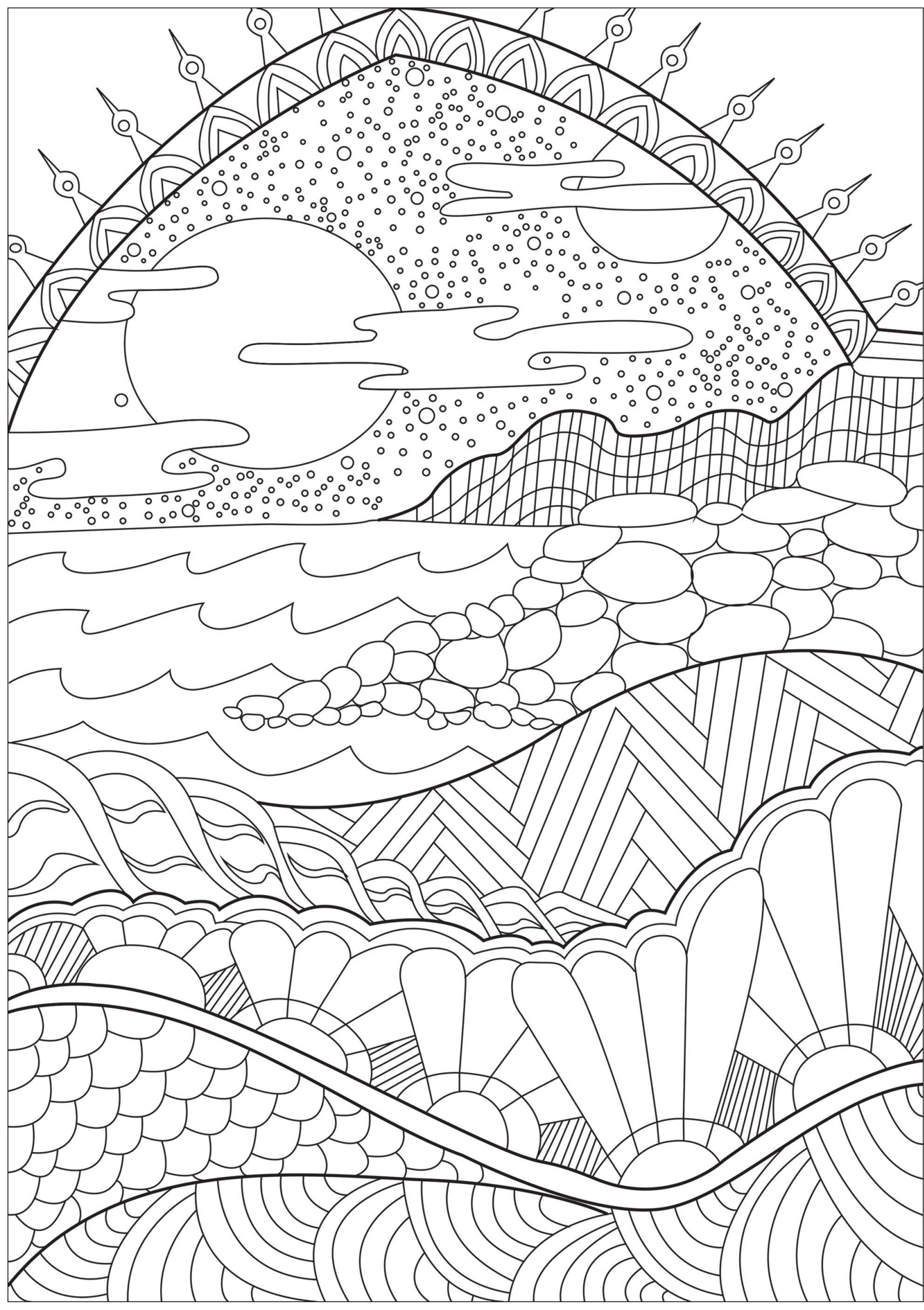






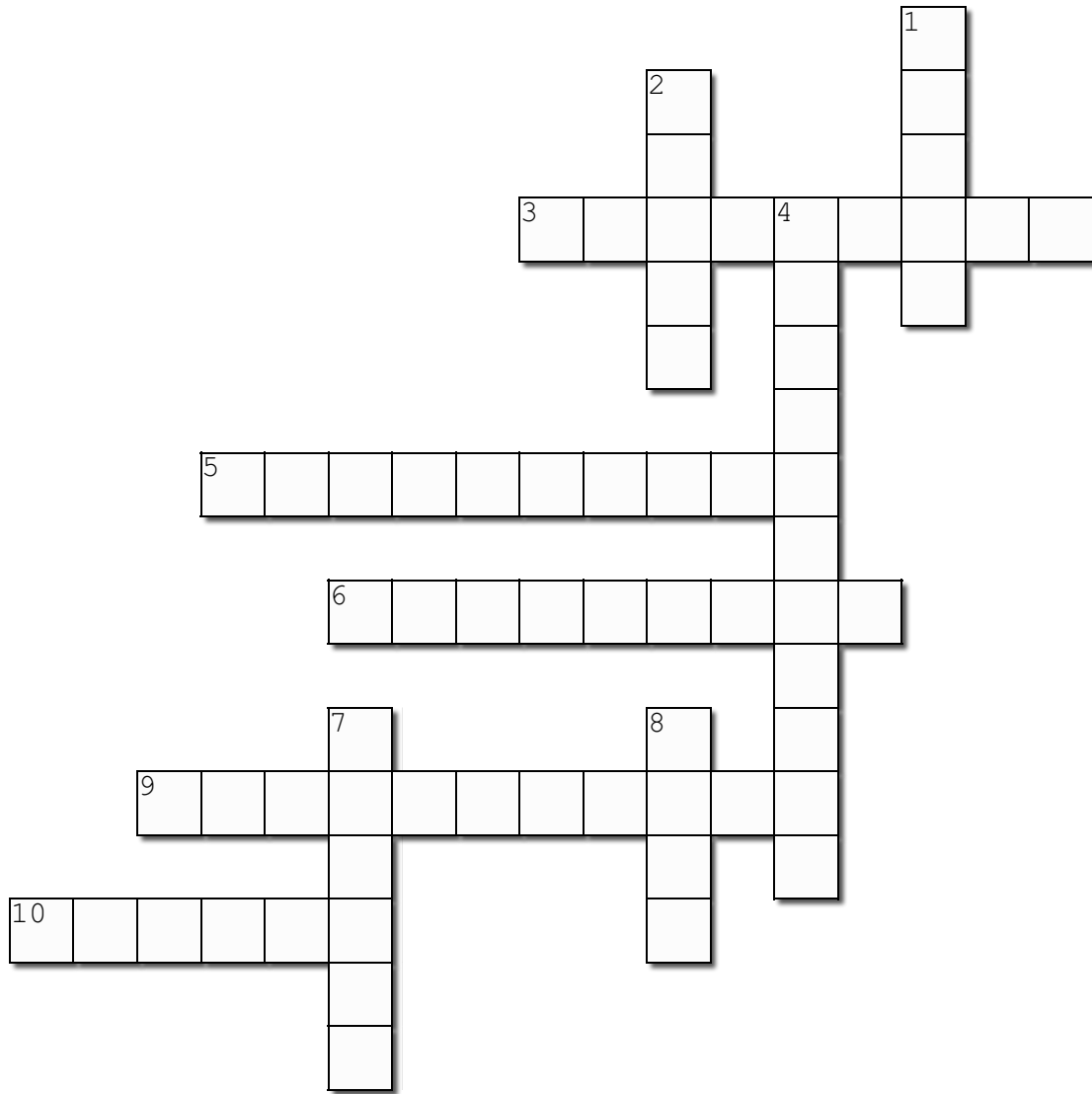






# Summer Cryptic Crossword

All of these cryptic clues describe something nature-themed that you might see in Summer.  
Can you crack all the clues?



Created using the Crossword Maker on TheTeachersCorner.net

## **Across**

- 3.** A flower you might get a dairy product from? (9)
- 5.** Meadow blossoms that cannot be tamed! (10)
- 6.** An insect that might breathe fire over the pond? (9)
- 9.** Florence \_\_\_\_\_, a night-time bird (11)
- 10.** A doddle, or a meal from a hamper (6)

## **Down**

- 1.** Where the waves wash up on a sandy place (5)
- 2.** Playful mammal of rivers, like a weasel (5)
- 4.** The blossoms of a very 'old' tree, used for cordials and wine! (11)
- 7.** These go 'cheep' from the nest (6)
- 8.** Joking around, having a laugh, or a songful bird (4)



# Blossoms Wordsearch

All these trees and shrubs make delicate blossom flowers in spring and summer - making them very popular with bees and butterflies! Can you find them all in the wordsearch?

V	B	L	H	A	Z	B	O	S	W	C	M	C	F	D	U	F	S	A	C
I	G	B	D	C	P	G	C	Q	I	T	O	D	H	C	V	E	M	K	W
B	A	L	J	R	H	P	X	S	L	F	L	T	B	D	D	L	A	U	A
U	R	A	R	A	V	O	L	G	D	Y	W	V	Q	V	N	I	G	B	T
R	A	C	J	B	Q	P	R	E	C	G	J	G	M	S	B	M	N	O	O
N	Y	K	V	A	E	B	E	S	H	R	D	U	Y	Y	S	E	O	F	D
U	U	T	P	P	F	J	G	A	E	X	A	E	R	Y	H	T	L	Q	U
M	B	H	Z	P	D	K	W	W	R	C	U	L	T	D	Y	R	I	Q	M
G	V	O	A	L	Z	O	O	E	R	P	H	D	L	H	H	E	A	M	E
E	V	R	T	E	N	L	G	M	Y	Z	O	E	E	A	R	E	R	S	D
D	D	N	I	M	F	H	U	W	L	E	V	R	S	W	F	T	M	L	L
O	Q	T	W	R	G	N	F	Y	O	P	M	R	S	T	S	Z	Y	R	A
M	Y	U	E	S	R	B	I	I	B	O	K	O	A	H	N	A	C	X	R
N	P	D	I	U	B	M	O	R	D	T	D	S	M	O	F	U	V	V	K
U	L	W	B	N	P	Q	Z	J	Z	B	E	E	T	R	B	Y	T	L	O
E	W	A	V	D	C	M	Q	P	P	B	X	Y	O	N	S	G	M	N	S
C	L	A	J	N	E	E	F	O	X	G	L	O	V	E	T	R	E	E	D
C	D	F	O	R	S	Y	N	T	H	I	A	A	I	A	N	W	L	Y	L
P	D	U	N	B	A	R	B	E	R	R	Y	X	W	E	A	F	O	Z	R
A	I	D	T	N	A	A	L	B	O	R	V	B	P	J	N	G	H	D	I

Viburnum

Forsythia

Blackthorn

Wild Cherry

Medlar

Quince

Apple

Crab Apple

Myrtle

Horse Chestnut

Barberry

Elderflower

Guelder Rose

Pear

Foxglove Tree

Hawthorn

Laburnum

Lime Tree

Dogwood

Magnolia